

CRYPTOGRAMS

1. Bottled Up.--A BCDEF G HCKLKCM NOCDPK LQKE
 EKFRDGDODREN HCRPK ARLE OOK EKLNSGSK-
 CN SCDEOKA OOK NORCM BEAKC OOK QKGAT-
 DEK "NODTT GO TGFKCQKGAN."

Dallas, Tex.

IFANDOR

2. Beastly.--M XFEECJ AMH CB HGF XNCBH AHF-
 SA CX HGF *BFJ *PCNT *SRKEDQ *EDKNMNP
 HNPDBO HC NFML KFHJFFB HGF EDCBA.

Dallas, Tex.

IFANDOR

3. Senatorial.--VCVO DRVO UJDN RJCW WVVO DKM-
 PVVO YQDO PRVG QBARP OQP JUDJGN PQ K-
 VTJMO BOJUPVKVY. *JKMNPQPUV.

Philadelphia, Pa.

H. ELL TEE

4. Un-marital.--RBNMU PUB UGJ TRAKBCUBHVG GAJ
 TVEY PVMU GAJEBUCUBHVG PBNYJ FNEKYR HK
 ZVFGMIUKJ, NAFNVMGHYR CGVEKJ JNB.

Bastrop, Tex.

HOODWINK

5. Ace-high.--HIPALS ASBCI DEFP GFJK CMNEP
 AFCD. AFICMKNK AIMCKGD NHOC EMZ QSHPM-
 KLZ ZCGHS. EFZC PFJX ECIF!

Decatur, Ill.

AITER

6. Gay Attire.--IJMGFE FKKFMTE: NJNDQFAE ZAP-
 AQJM XTFMP PQMAKTC QMJSPTMP, OMFR ZT-
 PQ, PFND NJFQ; FMGJMR UFEE ISHNQAJH,
 VAOV PAED QJKKTM, UEFND QAT, QSLTCJ.

Jackson Heights, N. Y.

OEDIPUS

7. Poor aim.--KECDXPH OWKCTRP DNAWK KEHV UF-
 AJW; VSEHP HSOVC DRLCEVW LRAUN; FLCDS-
 EA HRVZWA LFCNVV CSBW RJWA WSJWC.

White Hall, Ill.

BEE WILDER

8. Now, hep.--IWCHU BTPQKO, LTMN XLW *TA, BC-
 DE. FGHI JKLMNO PQR STU VWXY. ZCDS, O-
 ACZUI SIOMGHZQK, VKGHYXI JKGFI, QREXG-
 THO TM.

Altadena, Cal.

FLUKE

APRIL SOLVERS' LIST (Conc.)

15-0-5; Larry 15-0-0; Molemi *-0-2;
 Nollid 29*-5; Nutmeg 28*-9;
 O'Casey 18-1-0; Oedipus 19-0-6-4;
 Orion* 14-0-0; Paul and Virginia 21
 0-0; Quirk 24-0-5-6; Sherlock Holmes
 7*-1; Sibyl* 21-2-2-4; Sue de
 Nymme* 24*-2-1; The Gink 28-0-5;
 The Gopher 16-0-0; Tyro 6-0*-5; Val
 Entine* 20*-8; Wrong Font* *-5
 12; X. Trax 19-0-5-5.

A final couplet was omitted from
 #22 in June:

5-Catch a cheater at his game,
 But, perchance, you'd do the same.

THE ENIGMA



AUGUST 1961

GREENFIELD, MASS.

NO. 689

IN MEMORIAM

(Dedicated to Puzzledom's
 Dear Departed)

By Q

In the twilight's dusky gleaming
 As the daylight fades away
 Into shadows soft and gray,
 E'er the pale, wan moon is gleaming
 I am musing, fondly dreaming
 Golden dreams of yesterday.

Mystic faces are returning
 Thro' the shimmering veil of night,
 Gleaming in the trembling light
 That is faintly, softly burning,
 And instill my heart with yearning--
 With a sadness of delight.

I can see each one, now sleeping,
 In his flowered bed, at rest,
 Once again vibrant with zest--
 Thro' the misty past come creeping,
 Memories golden ever keeping
 Of the days they loved the best.

Sadly they file by, revealing
 Mysteries that are no more--
 Each pale face seems to implore
 Recognition, and appealing
 Ever wistful, come stealing
 To my heart, weary and sore.

Mystic comrades, glad I greet you,
 Pain would I keep you here
 For your memory's ever dear,
 And in fancy oft I meet you
 Every ready--glad to treat you
 As old friends, true and sincere.

Let me listen to your stories
 Of days when you were supreme,
 And your faces were agleam,
 With the knowledge and the glories
 Of a thousand odd victories
 Each of which now but a dream.

Mystic ties still bind us ever,
 Man to man and heart to heart,

Fancies dear than ne'er depart,
 That will fade and vanish never
 But in each new fond endeavor
 Bind us closer to our Art.

And the silent Sphinx of olden
 Every watchful--ever still
 Will guard over us until
 We at last in Life's sweet golden
 Twilight eve, with you beholden,
 Mount Death's dark mysterious
 hill.

Having solved Life's greatest
 seeming

Mystery, as you before
 Did evolve it--we once more
 Will renew the ties now gleaming
 In the great Beyond and dreaming
 Of the days that are no more.

(1911)

POST OBITUM

Dear Arty Ess:

With your passing from our midst
 it is as if the very bottom of every-
 thing has dropped from under us.
 Yet, in theater parlance, the show
 ---the NPL---must go on. "Tears for
 the dead, cheers for the living"
 must be our attitude.

You once let it be known that you
 had no patience with crepehanging.
 So we must not now overdo it by
 hanging crepe for you. If you could
 communicate with us from the grave,
 you would say: "Distress not your-
 selves with useless prolonged sorrow
 over me, but keep right on with your
 puzzling, and have fun while you
 may."

Although I have not had the long
 close relationship with you, Arty,
 which so many of the Krewe have en-
 joyed, you were wonderfully kind to
 me, of which kindness I am ashamed

The Enigma is the monthly magazine of The National Puzzlers' League.,
 a non-profit educational organization. The subscription price is \$3.00 a
 year, or \$1.50 for six months.

The Official Editor and Publisher is William G. Bryan, 292 Davis Street
 Greenfield, Mass., to whom all communications should be addressed.
 Files of League puzzle literature have been deposited in the Library of
 the Franklin Institute, Philadelphia, where they may be consulted.
 Entered as Second Class Matter, December 30, 1953 at the Post Office of
 Greenfield, Mass., under the Act of August 24, 1912.

to say I took full advantage. Small in physical stature, you were a giant in Puzzledom, and more than any other in the League, you were all of what we try to pack into the phrase "that grand old man". "If everyone to whom you did a loving service were to bring a blossom to your grave, you would sleep there beneath a wilderness of flowers."

It seems impossible that it could have happened, but---Dear Friend, you are gone forever from us. You are in eternity with your beloved M.E. You sleep beneath the shadows of the clouds, careless alike of sunshine and storm in the windowless palace of rest. A great puzzler that you were, you know well (if anyone knows anything on the other side of the grave) the answer to the greatest puzzle of all---what happens to us after death.

Farewell, O Sage of Centre Hall.
With your brave spirit guiding us,
we will do our level best to carry
on where you left off.

MIDURNDIST

"Arty was a great man, as well as a Titan among puzzlers! His passing is a great loss to Thedom. At last he has gone to learn the answer to the greatest riddle of all--life! I wonder if C. Saw, Gi Gantic, Nypho, Damon, and such greats of yesterday as Ernest, Kosciusko McGinty, Remardo and others too numerous to mention, have 'A Riddlers' Club' or 'A Diamond Club' or similar organization in the eternal life? If so, what a glorious reunion awaited Arty's homecoming. Arty, I know, was sure of a life hereafter and that he would be reunited with M.E. To him the interim between her death and his was a short period of enforced separation from her with whom he had shared more than fifty years ('good years') of wedded life."

HOODWINK

"I am greatly saddened by the news of Artzy's death. I feel he did more for the cause of Thedom than perhaps any other one person in its history. I make no exception in the cases of Kosciusko McGinty, Ernest, Remardo, and the greats of years past, who may have been the loyalest of the loyal in their days. They added much to the enthusiasm for puzzles that were universal then, but Artzy

supported the League when it began to falter. And his support is simply inestimable. He did so much for us, so much.

EVERGREEN

Theedom has lost a friend.

You and I who have had the rare privilege of knowing Arty Ess either in person or through his countless letters of help and encouragement to the tyro, the exchange of banter and homely interests of his life with others, will feel the loss of such a friend.

With Arty, his home, of course, came first; but Puzzledom was so closely linked in his ardent to aid his fellowman that the two important phases of his life overlapped to a marked degree. I was fortunate in knowing him outside of Thedom, having visited him in Scranton, and later in Centre Hall: I have played bridge with him; I have gardened with him; I have consulted him at numerous times about my present post as Editor of The Enigma, and I have always found him to be most co-operative, kindly, eager to spread his knowledge among the less-informed, without glamor, that Thedom might flourish. We have had our differences; what relationship between friends doesn't have its ups and downs?

Looking back at the twenty-five years or more that I have known Art, he has brought forth a wealth of memories: the conventions where he and M.E. were shining lights; the informal association in his home; the fascination of his correspondences, all of which portray the ever-saddest thought that

We have all lost a Good Friend.

B. NATURAL

STANLEY G. REMINGTON

Word comes from Martelia of the death of L. E. Phant, in Baltimore, on June 23, 1961. He is survived by his wife Florine Cook Remington and a son John T.

L. E. Phant was one of the charter members of The Dixie Mystics, that colorful club in the early annals of the League.

#28 Rebus in July should have had five letters, not six.

JUNE SOLUTIONS

1. A suburb. 2. Undertaking. 3. M-utter. 4. Squirmed, squired. 5. Cuisines. 6. Scrump, shrimp. 7. Aspire, praise. 8. In the middle of the road. 9. Wassailing. 10. Charter, chapter, chatter, chanter, chaster. 11. Bosom, OvolO, Given, UtillE, SorrI; bogus money. 12. E-lections, electrons. 13. Parleys, players, parsley. 14. S-implicity-y. 15. Rhyme. 16. Strawyard. 17. X-erotes. 18. Anecdote, toe dance. 19. Pseudocarp. 20. M-isle-d. 21. Pro-rated, predator, teardrop, parroted. 22. H-Esternal, Pathed, Toph, Screw, COPYcat; hepatoscopy. 23. Overage. 24. Comit-raged-y. 25. The white collar workers. 26. Devil-may-care. 27. Devilish. 28. Devilkin. 29. The Devil you say. 30. Fidel Castro. 31. Irregularists. 32. Grotesqueries. 33. The varicolored. 34. Ungarbed.

1. Lad had bad dog. Dog had bad bit
2. Fat old sow and her pig saw big
3. Senior citizens and civic groups
4. "Gyratory", peculiar word. Aboli
5. Trash truck comes around early.
6. Gaiety means fun, laughter. Howb
7. Curved orbs decoy shrewd batsmen
8. Black nymph, first judge vow qui

All by SHERLOCK HOLMES

A	T	T	A	S	T	A	R	E	D	I	P	L	O	S	O	M	A
T	O	O	T	T	E	R	E	D	I	K	E	I	R	A	M	E	N
T	O	R	T	O	R	I	N	G	P	E	R	G	A	M	E	N	I
A	T	T	E	R	R	A	T	E	L	I	G	T	N	A	M	E	N
S	T	O	R	K	A	N	A	L	O	R	A	N	G	O	T	A	N
T	E	R	R	A	B	I	L	E	S	I	M	E	A	N	O	N	I
A	R	I	A	N	I	Z	E	S	O	V	E	R	T	I	M	E	S
R	E	N	T	A	L	E	S	E	M	E	N	E	A	T	E	R	S
E	D	G	E	L	E	S	S	E	A	R	I	S	N	E	S	S	E

[illegible]

Q U A S E R F A I R
B A N K E R F O U T
V E R S E W I N G
F A N F E N N I
M A R I G A L E S
P E R D I N I I D
C A R D I N I I D
N A Q O A Q T O O

Paroxysmic

The desire to take medicine is perhaps the greatest feature which distinguishes man from animals. Sir William Osler.

There is the same difference between their tongues as between the hour and the minute hand. One goes ten times as fast and the other signifies ten times as much. Sydney Smith

Albert E. Johnson, our new member from Sacramento, Calif., writes: "As a result of my curious nature of reading books both Old and New, I found the following in an old "Harper's Young People of 1888, and thought it might appeal to some:

There was a man of wondrous fame,
Six letters did compose his name.
When he full thirty years had seen,
His name was lengthened to fifteen.
Then unto him a wife was given;
Her name was spelled with letters
seven.

If you can me this riddle tell,
'Twill prove you've read the Bible
well.

("Joseph". Pharaoh changed his name to Zaphnathpaneah. His wife was Asenath.)

June 7, 1961

Dear League Members:

Thank you sincerely for your
thoughtfulness at the death of my
brother.

The flowers were deeply appreciated.

Sincerely,
His sister,
Mrs. Lola Person

Centre Hall, Pa.

P E N E T R A L I A

1. PHONETIC REBUS (8)

S

Out of my REBUS, I promise my kith,
If you were here, I'd ply you with
Turkey, biscuits, chocolate cake--
Everything good that I could bake.
Dallas, Tex. IFANDOR

(2) PHONETIC CHARADE (9) *antacta*

My grandmother had six children
fine,
But only one was a ONE of mine.
Two by two when they walked to
the *TWO,
It might be called the origin of
a zoo.

THREE is a wingless little mite;
Tho some rest their head on it at
night.

I've never been very close to the
WHOLE,
But everybody knows, it's near
a pole.

Elmhurst, N.Y. OEDIPUS

(3) TRANSPOSAL (7) *gallery*

I'm visiting a ONE today *allergy*
(For Modern Painting I'm a
sucker)
They'll serve me tea and cakes and
things;
I'll wear my fanciest bib and
tucker.

I won't dare touch the canapés
For shrimp and sea food I've a
TWO;

But I'll make out with just plain
tea

And little cakelets filled with
goo.

Hastings-on-Hudson, N.Y. FRINKUS

(4) WORD DELETION (7; 4, 3) *blacked*

Run next door, Billy, and ask
Mrs. Jones

If she'll ONE me a cupful of
flour;

My batter, you see, should be
thoroughly WHOLE

And the cake must be done in an
hour.

Of course I will save you a piece,
Billy Boy,

Now run along, Billy, please do;
You may have a big piece as soon
as it cools

And a small one 'fore going to
TWO.

Houston, Tex. PAUL AND VIRGINIA

(5) REBUS (7)

ILY *residly*
If you're literate, by Phoebus,
You should get this rebus REBUS.
Whittier, Cal. MOLEMI

(6) WORD DELETION (7; 4, 3) *slavery*

It's just a hundred years ago, you
may recall,
We fought a war to abolish ALL.
By now the distinction between
Blue and Gray,
I am happy to ONE has disappeared
today;

Both sides it may be said were
good at gunning,
History will teach us who was the
more TWO and cunning.

Elmhurst, N.Y. OEDIPUS

(7) TRANSPOSAL (4) *Pyot-typo*

In India used, ONE is a word
Which in this country is not heard.
It means a peasant who, with toil,
Has learned to till the fertile
soil.

In any country anywhere,
Concerning any new career,
TWO is a word that means him who
Is green at what he tries to do.
Waldorf, Md. MIDURNDIST

(8) DELETION (5, 4, 3) *spray*

The roses in my garden
Don't have the proper soil,
The sun shines much too little
And much too much I toil.

The plants are too expensive.

I THREE out bucks for ONE,
Then TWO the rain will hold off
Till I get that job done.

Hastings-on-Hudson, N.Y. FRINKUS

9. DELETION (7, 6)

When Cinderella lost her shoe,
Or maybe that night it was a TWO,
And when the Prince his search had
begun,
How the gossipers called it a
royal ONE.

A modern mermaid who kicked off
each

Of her bathing TWOs down by the
beach.

Created a ONE there by the sea,
When diving in, she shed her
bikini.

Elmhurst, N.Y. OEDIPUS

(10) THIRD-LETTER CHANGE (6) *meat*

Should some noxious PRIMAL bite
you,

Though it NEXT you -- as it
might, you

Know -- don't let your fears
excite you;

Doc will FINAL shots to right you.
Whittier, Cal. MOLEMI

(11) REBUSES *dismising*

A B C D E F G H I J K L M N O P Q R S T U V W X Y Z *mod*

You've been too much concerned with
your misery,

REBUS TEN your few fragments of
luck;

Please forgive me: my head starts
to REBUS THREE;

End your tale - pass Dame Fortune
the buck.

Houston, Tex. PAUL AND VIRGINIA

(12) DOUBLE ACROSTIC (3) *HOT DOG*

1. Bituminous bearer, known quite
well.

2. Combining form for evil smell.

3. Does its word mid tide and
swell.

INITIALS and FINALS

Goes to baseball, football too,
Covered o'er with sundry goo.

Altadena, Cal. FLUKE

14. ALTERNATE (7)

"Transaction closed!" the huckster
said.

"It ain't, neither! quoth the
pumpkinhead.

"I'm badly ONE! Avoid a brawl!

Return my cash--the TWO is ALL!"
Franklin, N.H. CHET

(15) REBUS (11)

ALLALL *altogether*
Gurgling, gushing,
Rolling, rushing,
Stumbling, surging,
E'er emerging,
All a-quiver
Runs the river.
Greenfield, Mass. B. NATURAL

16. PALINDROME

Emos was a protégé;
And high art was his life.
Uncle was a bachelor,
Neither kids nor wife.
He said Emos would die young,
As all bad artists do,
But a friend said: "Just wait and
see,

He may yet startle you.
*O E*I* *A**,* *E*O*.* *O*E* *A**,*
*A**E* *I*E*O*.* *SOME*
Altadena, Cal. FLUKE

17. WORD DELETION (7; 4, 3)

Come fly with me, Sweet, to some
tropical ONE *ISLEAD*
Where surf smooths the sand in the
shade of the palms;
I'm TWO for you, Dear! Let us live
in the sun
On manna, and love (and on Uncle
Ned's alms).

Nay, stay, Sir, I fear that you ALL
me a bit;
Down yon garden path with you, Sir,
I'll not go.

Oh, sure! You may love me; but only
a whit -

Your passion's reserved, Sir, for
Uncle Ned's dough.

Houston, Tex. PAUL AND VIRGINIA

(18) BEHEADMENT (6) *STRAIT*

A sailor man is in a fix,
Wrecked upon a foreign SIX.
Thankful that he's still alive, --
Gratitude's a seldom FIVE.
Ashore, he FOURS in water cool, --
A river forms a welcome pool.
Exploring yon, he finds a THREE,
With fruits delicious, all for free.
No other souls upon TWO dwell,
Except one dusky native belle.
All thoughts of rescue does he shun;
He says: "This suits me to a ONE!"
Altadena, Cal. FLUKE

19. CHARADE (7) *capsing*
Headgear, I abominate,
And very seldom wear.
If I need to buy a ONE
I forget my TWO, nor care!
I'll cover up my curls
With scarf of blue or white
And sail away before the wind;
Unless I ALL, home by night.
Dallas, Tex. IFANDOR

20. WORD DELETION (9; 2, 7)
List, my friend, or you will rue
it.
If not news, I still will TWO it.
If you're done ONE, you cannot do
it, --
Really, might as well eschew it.
To ALL about the world, we'd
rather, --
A rolling stone, no moss to gather.
Altadena, Cal. FLUKE

21. FIFTH-LETTER CHANGE (8)
Some foods contain FIRSTS and as
"doubtful" are classed;
You may not be able to eat them
with LAST.
Whittier, Cal. MOLEMI

22. FIRST-LETTER CHANGE (7)
The lady made a salad
With radishes and chive,
A few tomatoes, onions,
And very crisp endive.
She added purple PRIMAL
Mixed in with water-cress,
And then some cloves of FINAL.
Result? It was a mess!
Greenfield, Mass. B. NATURAL

23. DELETION (7, 6)
The copy boys were running;
The re-write crew were punning;
Ambitious TWO were gunning
For news to make a scoop.

The paper went to press,
Now gone, the hectic mess.
They all went out, I guess,
For crackers and ONE soup.
(For crackers, thick ONE soup)
(For crackers, split ONE soup)
Altadena, Cal. FLUKE

24. REBUS (7 3 4) *Against his will?*
OOLW
Teen-aged Tommy Toodles, to his
shame,
Was forced in school to
apologize.
Of course, his teacher, worthy
dame,
Knew he did so REBUS, you'll
surmise.
Iowa City, Ia. ARCANUS

25. SIXTH-LETTER CHANGE (7)
The long-armed FINAL swing through
the trees
And pause now and then to finger
out fleas.
The PRIMAL creature swings out on
the bells,
Of his misshapen figure one author
tells.
Los Angeles, Cal. SOL

26. ACROSTICAL ENIGMA (12)
1-Away for a sail, sea doth call.
We overturned in a sudden squall.
2-In era temperate and calm,
Travel about, preach, bring balm.
3-Nary a U.S. miler was first;
One was third, in a final burst.
4-Thy speech is like a strident
cry,
Bombastic and too easily come by.
5-Renew our troth, I pledge with
you
A placid future, if you do.
In one word, ALL is a bat --
Almost as simple as C-A-T, cat!
Dallas, Tex. IFANDOR

27. ANAGRAM (1 8 2 3 6) *a shadowy*
Has ev'ry home, as cynics claim,
Secrets, stained with stifling
sin?
If so, is family pride, guarding
name,
"A SENTINEL, TO LOCK THESE" in?
Iowa City, Ia. ARCANUS

28. GENT REMAINS FROTH (3 7 5)
(Suggested by JACK O' LANTERN)
29. I'LL SCAN REVUE
30. "HE CATS" DO RIP (3 8)
Brookline, Mass. HOHO

31. HYPOTHESIS: EXACT AIL IN MAN
(3 8 12)
Greenfield, Mass. B. NATURAL

32. ONE HELPS OUT REAL NAP (*8 4 6)
33. ROUT SOLE BOTHER (7 7)
34. 0, RAT DIED NICE (1 11)
Corinth, Miss. FRED DOMINO

ANTIGRAMS
35. TH' GALS DO AGREE (2 11)
36. TOP THAT AS CHEER (3 11)
Norfolk, Va. A. CHEM

-----0-----
1, 2. Squares
1. Owner of a vineyard which Ahab
coveted (1 Kings xxi). 2. A recept-
acle for incense. 3. A watchtower
or station for signaling. 4. A pur-
ple nitrogenous dyestuff. 5. A ve-
hicle drawn by three horses abreast.
6. Mother of the prophet Samuel.
1. A South African wildass allied
to the zebra (which see) 2. Noisy
confusion. 3. Southern Iowa town on
U.S. Highway 169. 4. Loosely, a re-
ligious mendicant (Hindu). 5. Open-
ing the mouth wide. 6. A small ge-
nus of tropical Asiatic and Malay-
sian palms.
Whittier, Cal. MOLEMI

3. Truncated Pyramid
Across. 1. Letters F. 2. To Min-
gle. 3. Var. of WORRIT. 4. Var. of
GINGILIS. 5. A legendary Spanish
hero. 6. Attached firmly. 7. Frac-
tions containing heavy oils and par-
affin. 8. A commercial agency. 9.
Mycetozoa (Dorl.)
Down. 1. B. 2. Mamma. 3. (Ref.
Sp.) Tell. 4. Var. of WORLD. 5.
Thanks! 6. GOLDAN (Sur. Gen. pg.
325). 7. Windlin (Wr. D., pg. 507)
8. Pass, Alaska, Circle Land Dist.;
1/2 SW of Dawson. 9. Forgetful (Jam).
10. Implacable (Hall). 11. An Alli-
ance including the lilies. 12. Very
lightly armored. 13. SOHAGI (An-
drees). 14. Cities*. 15. A low sand
hill. 16. SCA (Oxf.) 17. Ice*. 18.
E.

4. Double Star
Across. 1. C. 2. River, Spain,
comm. of Lugo. 3. NYE (Oxf.) 4. Foot
pages (Nares-Hall. pg. 324) 5. Mar-

inate* (Oxf.) 6. DESCALIA (R. and
McN). 7. A scion or cutting* (1st
Ed.) 8. TORTOLES (Cram). 9. The
black slug (Pg. 2370) 10. Italian
stuffs for summer wear (Simmonds).
11. A unit of reluctance. 12. From.
13. S.
Down. 1. F. 2. A syllable denoting
assent. 3. Steam. 4. CENTRE STAR
(Centennial Atl.) 5. To store in
excess. 6. EPICARIN (Dorl.) 7. Un-
salted (Post.) 8. One who has to do
with gallons. 9. Blanched. 10. Jel-
ly fishes. 11. Say*. 12. The tone
D. 13. S.
Lennox, S. D. SHERLOCK HOLMES

-----0-----
Major Numerical by VAL ENTINE
(5,3,6,2,4,3,9,2,7,4,7,3,7,2,10,2)
77-2-17-52-43-31-22-8-46-71: in all
respects
78-62-10-57-74-16-30: a polygon
79-34-56-12: a crumb (obs.)
80-5-27-39-19-41-49-65: plural of
"madame"
81-1-53-18-28-76-72-47-60:
certifying
82-7-69-61-25: shovel (dial Eng.)
83-3-6-48-55-36=11-66-35-64: used
with cosmetics
84-67-20-23-14-29-15-38-4: cravings
85-42-68-33-21-9-73-45: feeble
86-37-59-51-54-24-63-50-32: friends
(you hope)
87-44-40-58-26-70-75-13: acroamatic

Major Numerical by IFANDOR
(4,2,2,12,6,2,2,12,7)

50-36-16-26-45: ritual
51-29-35-14-43-39-7-8: volcanic
glass
52-19-44-6-13: consecrate
53-18-40: decline
54-46-15-20: move upward
55-4-10-33-24-30-47: dog
56-12-23-38-31-3-48: gay
57-9-21-49-41-34: puzzle
58-37: bone
59-28-17-1: earth
60-22-11-32-5-27-2-25-42: region

CRYPTOGRAMS

1. Fun in pun.--0 HOG TOB OBJKL WZ XK EIORKL
 OGR WGBACPHKGA "0A XFHK", XK BOWL, "W
 EIOR BKMFG LZWLLIK." OGL, BWYG FUKC L-
 CWGJWGY ZFPGAOWG, "FIL ZOMKZPI".

Dallas, Tex.

IFANDOR

2. Useless.--BCRWDQDUDHEB PO KLBH RLB LFOX-
 DHV XFAO DHARLPHU..... DNRLTFUL PHBCYBH-
 OPQB..... RLDR LPO KPMB LDO HT FOB MTW.

Bastrop, Tex.

HOODWINK

3. Pun in fun.--TDD PNALXWX MTJP WMP XRYPTCL-
 BN "CP=CPX". TBAWMPY ABP? ELQQLPX RTDD
 WMPY WYLRGRDPX "WAW YAQX".

Dallas, Tex.

IFANDOR

4. Un-ease.--ABOUT TBJ NUL HKLO KSSJMAIUAK-
 BL XKACBJA MTD FBS XCKNC TBJI KLMKRCA
 NBDDBLST CJLAM HBI HKIMA. ACKM NBLRI-
 JKAT OKMVSUTM UNAJUS VIBBH.

Jackson Heights, N. Y.

OEDIPUS

5. Income scandal.--0 HSCR AM HBD OC FAOHM SGJK
 DALJH NPLC CJHBPGOW FGPQ. NHANPH TAF-
 NPBGO. NAPTGH VLGTQPM CVLHPTK XADBM.

Thief River Falls, Minn.

PIE RAIT

6. No alopecia.--PDJLF IRUPXOD JUHZ KDLU XSRQ
 EDOG KHDG, VDLG ILUP PDNLQJ FRVWOB W-
 RQLF IRU UHWDLO PDLO, FRXQWUBALGH VD-
 0H.

Bastrop, Tex.

HOODWINK

7. Mantel-piece.--QIJNBG SCKBAWOK BIJQU QJIMP-
 XC WMRAB NXIOAB SJCKB; (NIOAS AKXE QX-
 DOIA AOKB); VXQJBO PCQU KMLS ABIOJW,
 JKBVOIA JRXIK VXRL0.

White Hall, Ill.

BEE WILDER

8. Eye-strain.--USNAVY HYNNOKT XNTI POBTR=HB-
 TNZC NYPORT OIZH GPTVZC RZBVDPI URZP-
 H YTVAB HYTPBVZS. ZNX MIRTH OIPYNUR.

Altadena, Cal.

FLUKE

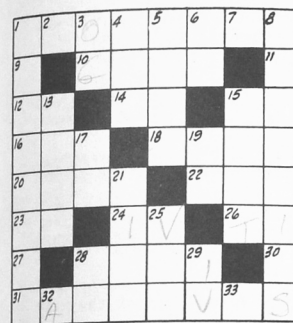
Oedipus has on hand some remain-
 ing copies of "A Complete Chrono-
 logical History of The National Puz-
 zlers' League which he has compiled
 as Official Anniversary Historian.
 Anyone wishing a copy write to him:
 they are gratis, but enclosed \$.08
 postage would help.

It was Disk Eyes who has moved to
 43 N. Forest Avenue, Rockville Cen-
 ter, N.Y., and not Sea King as men-
 tioned in the June Enigma.

Dinah Might will be "out of the
 running" until October, as he leaves
 for Europe as Supervisor for eight
 boys on a YMCA sponsored tour.

ENIGMATIC CROSS-WORD PUZZLE

By M. U. LATER



HORIZONTALS:

1. All through and nothing gained
9. Hashish.
10. Angora toga.
11. Analogical.
12. Grit and grout.
14. A cat.
15. To purchase twice.
16. Horse and rider.
18. Your time is my time.
20. Mixed drink with no liquid.
22. Inept.
23. Ailing article.
24. Four clinging vines.
26. Getting it all backwards.
27. Solon.
28. Straight flush.
30. For the nonce.
31. Shiny farthings.

VERTICALS

1. Narrow reflecting ruler.
2. Trickish.
3. Molding.
4. Stone bird.
5. Oh!
6. Tout ensemble.
7. Gone.
8. Fortresses.
13. Bound to occur.
15. Nothing but the filter.
17. Govern.
19. Naughty.
21. Avid singer.
25. Settee in the five and ten.
28. Pastel.
29. Nearly a nickel.
32. Alone.
33. Ease.

MAY SOLVERS' LIST

Everything: 28 flats, 4 forms, 8
 crypts: Fluke, H. Ell Tee, Hoodwink,
 Ifandor, Val Entine*, Wrong Font*.
 A. Chem 26-0-5-3; Al Gebra 23-0-0-0;
 Allez *-0-0-0; Amor 15-0-2-1; Anti
 Que 11-0-0-0; Bee Wilder 17-1-3-3;
 Billy Goat 23-3-3-3; Blackstone 27-
 *-0-1; Captain To 25-3-3; C. Kerr
 25-0-2-2; Dinah Might 21-0-0-3; Dun-
 roven 18-4-2; Elmore 27-0-7-3;
 Fiddle *-6-3; Helen Highwater 20-
 0-3; HoHo 15-2-1; I. N. Joyum 9-0-
 *-3; Jake 17-0-3; Jimo 7-0-2-1; Mo-
 lemi 26-0-1; Nollid *-5-5; Nut-
 meg 27-3-3-3; O'Casey 14-1-0-1; Oe-
 dipus 26-0-7-2; Paul and Virginia
 17-0-0; Quirk *-1-7-1; Sherflock
 Holmes 4-2-2; Sibyl* 19-0-2-2; Spud
 -0-0; Sue de Nymme 19-0-2-2; The
 Gink 24-0-5; Typia 18-0-0; X. Trax
 16-0-1.

HIS CRYPTS WERE CRIMES

By FRED DOMINO

A puzzler died, as all men do.
 His spirit soared aloft.
 Some solvers spoke quite well of
 him,
 While others simply scoffed.
 On earth he specialized in Crypts;
 The ones he made were tough,
 And he bamboozled many who
 Would try to solve his stuff.
 His Crypts were "hard as flint",
 some said;
 No mercy did he show.
 He called on refs, both rare and
 scarce.
 Most puzzlers didn't know.
 But, when he reached St. Peter's
 Gate,
 As he took his long journey,
 He faced St. Peter, and called for
 A good defense attorney.

June 1961

It has been many years since the East has had a representative among the executive officers of the League.

OEDIPUS has been a loyal and active member for many years, and is well versed in the history of the League. He has written a complete history of all its activities since it was founded.

He is a constant contributor to The Enigma, and the editor is now preparing a special 24-page issue to include a great variety of his formerly unpublished material. (This is being paid for by OEDIPUS).

As OEDIPUS is now associated with several literary organizations we feel he will also promote the addition of new members to our group through these connections.

OEDIPUS will reach his eightieth birthday in October this year and as tribute to his age and experience, we, the undersigned members herewith

NOMINATE AND SECOND OEDIPUS

for the Office of President, to be voted for at the next election, this year of 1961.

C. KERR - Hilda Williams

AMBROSE - Dwight L. Wardell

FINANCIAL STATEMENT

Receipts in June: \$6-Jay Esstee, \$5-Archimedes, Sherlock Holmes, Fred Domino, Freddie, \$4-Nollid, \$3.25-Tyro, \$3-Neon, Sue de Nymme, William Baring-Gould, New York; Mephisto, Allez, \$1.50-Gertrude M. Neth, Abington, Pa.; Mrs. Eli Isaacs, Newark, N. J.; Margaret P. Broadbent, New Bedford, Mass.; Mrs. R. W. Body, Cleveland, O.; S. T. Herish, M.D., Oakland, Cal.; Mrs. Agnes L. Kers-ting, Berkeley, Cal.; Mrs. T. P. Akins, Akron, O.; Lolita Bee Morris, Chicago, Ill.; Mrs. Nine Szatkowski, Wallingford, Conn.; Mrs. David Doherty, Auburn, Mass.; Louise T. Livsey, Roxbury, Mass.; Dorothy W. Mc Cullough, Anchorage, Alaska; R. Franklin Jones, Winter Haven, Fla.; Kitty Fought, Decatur, Ind.

Balance June 1	1066.58
Receipts as above	69.25
Total	1175.83
July Enigma	33.25
Typewriter repair	15.95
Mail permit adv.	10.00
Postage	5.00
Flowers for Arty	30.00
Add. env.	3.00
Total	97.20
Balance July 1	1038.63

The July issue of The Enigma was returned from Artaxerxes, marked "deceased". No details were forthcoming. However, in September, will appear a brief description of this old-timer, written to us when we took over the Editorship in 1953, and asking us not to use it until he had passed on.

Fluke's Double Acrostic #10 in May and his "novel Square in the Form Department proved a bit too much for the regular solvers; hence they were cancelled and not taken into consideration in the total answers' count.

A new directory is being offered with this month's Enigma, with a dual purpose in mind: the starred names represent the newcomers to the League. If any of them live in your neighborhood (or even if they don't), why not drop them a letter of welcome? Some people begin to think of addressing Christmas cards even though the sun beats high above in mid-Summer. Others may be glad to learn the correct address of the correspondent who has moved lately.

PROXY BALLOT SLATE OF OFFICERS FOR 1961-1962

President ...AL GEBRA, Robert Hooke, Pittsburgh, Pa.
(Alternate) ...OEDIPUS, Charles Jacobsen, Jackson Heights, N.Y.
1st Vice-President...FLUKE, L. J. Maxson, Altadena, Cal.
2nd Vice-President...(your choice).....
Secretary ...IFANDOR, Mrs. Clyde H. Butt, Dallas, Tex.
Treasurer ...DAFT, Mrs. Bert Newhall, Greenfield, Mass.
Official Editor ...B. NATURAL, William G. Bryan, Greenfield, Mass.

Please complete this Proxy Ballot and return to:

B. NATURAL, William G. Bryan
292 Davis Street
Greenfield, Mass.

not later than September 1, 1961

THE ENIGMA



SEPTEMBER 1961

GREENFIELD, MASS.

NO. 688

WHAT DID YOU SAY?

My brankie oye, sparuchle upon my
knee;
Tell me, bairn, are you very
paughty?
I may be stoit and stacker on
shaky legs
And scart my knee on yon bree kegs;
I'm not so spry as a springal now,
Can't even ride a staggle, I
allow--
But pawky miss, don't miche about
it,
I'm not quite hite, don't you doubt
it!

I truly believe, if NPL
To Scotland ever flew
IFANDOR would soon resign
From a braw, Scottish Krewe.
-----o-----

OPERATION SYNDICATION

By A. NONNY MUSS

According to Webster, the word SYNDICATE refers most frequently to a combine in the field of finance, or in that of journalism. As used in our puzzle game there is no definition available. I suppose it would be fair to say, a syndicate in our hobby is a group of two or more solvers who lend one another assistance in solving. Whether the little group operates regularly by the month of not, and whether the said assistance covers hints and suggestions only, or includes also the free trading of solutions, seems immaterial to my definition.

Covert trading of solutions seems a bit brazen to me, but in the mere swapping of additional clues, hints, or the like, I see nothing shameful

or harmful. I have both received and given that sort of help. I agree with Hoodwink's statement in June, that such mutual assistance results largely in mutual pleasure. I am all for that type of syndication.

However, the prevailing custom of submitting solutions we needed help to attain certainly lays us open to the charge of unfairness, and that, I think, is the very point Al Gebra made in his February article, when he spoke of cheating against the Solvers' List. For the list definitely credits us with solutions so obtained.

Some time ago, a writer in Enigma asserted that the purpose of the list is simply to indicate or identify the puzzlers who are interested in solving. If this were true, a bare list of the noms would suffice. Our membership roster, in fact, would offer the best, most complete table of interested solvers, since the only folks joining our League are those interested in solving puzzles. In SINCE YOU ASKED ME, in the May issue, one of the writers said he almost never pays any attention to the Solvers' List, therein leaning decidedly in my direction. However, I must admit that if this were the general feeling the list would have no proper place in The Enigma.

It must be the showing of the number of solutions each puzzler attains that gives the list its value, that being the only information in the list not also findable in our roster. All that particular information is of interest only as it provides a means of comparing the solving prowess of various puzzlers.

The Enigma is the monthly magazine of The National Puzzlers' League, a non-profit educational organization. The subscription price is \$3.00 a year, or \$1.50 for six months.

The Official Editor and Publisher is William G. Bryan, 292 Davis Street Greenfield, Mass., to whom all communications should be addressed.

Files of League puzzle literature have been deposited in the Library of the Franklin Institute, Philadelphia, where they may be consulted.

Entered as Second Class Matter, December 20, 1953 at the Post Office of Greenfield, Mass. under the Act of August 24, 1912.