

CRYPTOGRAMS

1. Be sharper.
 St. Petersburg, Fla. - IFANDOR
 AB CDD EF GHJKL, MHA NGCL AGC CDK-
 FCD EF HFCEP HQ MCRBDC AGC QCLSET,
 FBJCAGELW'F NDBLW.

2. Historical.
 Attleboro, Mass. - CAPTAIN TO
 NUB MOMENT BY MALXNMME YAYNZ = NXC-
 MM: *KAMCRM QMRWJM KIMTAFMEN; YAITN
 KBNWNB RXAK UWT JWFM AE *EMU *ZBCS.

3. Thirst for knowledge.
 Attleboro, Mass. - CAPTAIN TO
 ADUNCL UDXP MNOXP BIZOWY ABWS KE-
 CIUODWI: "MELODIOUS ZOXXCP B MBU,
 SDEWYIUCL KECLOCP: "TNBU POP UNC
 MBU TBWU UD ZWDT?"

4. Weather or not?
 Jackson Heights, N. Y. - OEDIPUS
 *FILMY PRESSILG MIABCB YCIDH JECAX
 QO JLI00EM; BTQU KRQUB OIMC PEW X-
 QP. MEJH SQTETW RIU COOCMJEDC QTC
 UYQRC UCCZ.

5. Old saying, new version.
 Bastrop, Tex. - HOODWINK
 CRWTH PRY ABDEYWFG ABDGT WJAYKTDW-
 GRTG EYGTD; ZYTG FYC TFDWIR AHGTY-
 FLE PYDCR, LKTDG HLJYBG MLDZ.

6. For concert lovers.
 Jackson Heights, N. Y. - OEDIPUS
 NOPQRST UVWXVSN YWZA: SNWYX *PRBO-
 CAVZ'P CAPZ DYWEY RWNUPQZQWYP S-
 VA BQP *AVTDQYX SYF *OYGYQPBFAF *P-
 HNUBWYH.

7. A puzzle.
 Middleville, Mich. - M. U. LATER
 NFFVFU AVGJVG, FUBJA *RAVTZN, VF O-
 RJVYQRERQ OL CRARGENYVN. ZNAL UVTV
 *V. *D. FBYIREF BSGRA RKCREFVRAPR FV-
 ZVYNE VAPBZCERURAFVBA.

(Concluded on page 9)

THE ENIGMA



AUGUST 1967

GREENFIELD, MASS.

NO. 761

FLATTISTS NEVER REFORM

By FRED DOMINO

I had a NIGHTMARE just last night.

I dreamed that I MIGHT EARN
 Some money if I'd drop my nom,
 Use my RIGHT NAME, and turn
 From writing puzzles, such as
 flats,

To writing short light verse.
 THE MARGIN favored nonsense
 rhyme

Which should be pat and terse.
 My wife, at once, vetoed the
 plan.

And told me that HER MATING
 To me, a rhymester, she had
 found

To be exasperating.
 So I am back at writing flats---
 Numericals, you see,
 For NIGHTMARE is a base that
 lends

Itself most admirably.

-----OO-----

DORIS NASH WORTMAN

Mrs. E. B. M. Wortman, better known as Dorse to members of the League, died on Thursday, June 8th, at Martha's Vineyard, where she has spent her summers for so many years. She was 77. She is survived by her husband, who was also known in the NPL as Treble, and a daughter, Mrs. Theodore H. Pinkerton.

The Enigma is the monthly magazine of The National Puzzlers' League, a non-profit educational organization. The subscription price is \$4.00 a year, or \$2.00 for six months ----- first-class mailing.

The Official Editor and Publisher is William G. Bryan, 133 Franklin St., Greenfield, Mass. 01301 to whom all communications should be addressed.

Dorse joined the League in January 1928, and from the start of her puzzling, confused the Krewe with a multitude of outstanding Phonetic Charades. She was also instrumental in giving the Tri-nade the popularity it deserved.

She was a member of The Ridders of New York from its inception in 1929, until its disbanding in 1957. She was President of the NPL in 1952, the same year that a most successful convention was held at Martha's Vineyard with herself as hostess.

In the late 1940's, Dorse's nom became less frequent in The Enigma, because she had taken on a new avocation: Double Crostics. She had been the assistant to the late Mrs. Elizabeth S. Kingsley, the originator of this intriguing puzzle, so that the continued output of this type of puzzle fell into most capable hands. They have appeared weekly in The Saturday Review and The New York Times; and periodically collections of them have appeared in book form for her fans. It was she who introduced the "cryptic Double-Crostic" with elusive definitions, such as: "spiritual leader in whirlpool (Mary Baker Eddy); "The hairless apple"

(Stanley Baldwin); "This camera has an eye for Alaska's big brown bear" (Kodak-kodiak).

Dorse's amazing series of puzzles that accompanied her annual Christmas Greetings have been a source of much pleasure since she joined the NPL.

CHAT

Belated sols from Nutmeg who is at present visiting her son in Malawi, Central Africa, show: March 24-0-0-; April 20-0-0-3.

On her way from the States, she stopped off in Australia for two months and was duly impressed by the sights from "down under". Of all the cities she visited, Perth and Adelaide appealed the most. Melbourne, she found, was "too American", for her, being a visitor to a foreign land.

She will be back home, she expects, by late September.

June has been the month for NPL visits. Hazy, Wortgaukler, Larry and his wife Bea made a surprise call on Nollid at her new home in Alma, Mich. The Gink, en route to Austin, Tex., dropped in on Hoodwink for a few hours of pleasant chat.

The Gopher is temporarily confined in the Ramsey Hospital in St. Paul, Minn., which may explain his absence in the Solvers' List.

COMMENT ON JUNE PENETRALIA

Top honors in June ought to go to A. Chem for her clever usage of common words to present a rather tricky flat. Captain To's #14 is excellent bringing to me another new word. HoHo's #15 is a pleasing flat. Ifandor's #22

is brilliant, and a most unusual flat. One rarely sees a six-letter Linkade divided as 5 and 2. Jen's #21 is a novel Charade with a new and ingenious theme. The #8 cryptogram was in its proper spot and proved the toughest in this department, for me. Vade's #3 square and Shadowy Raven's forms, both by newcomers were all most creditable.

HOODWINK

FINANCIAL STATEMENT

Receipts in June: \$6-Stuart S. Lane, Malosa Secondary School, Kasupe P.O., Malawi (through Nutmeg). \$5-A. Chem, The Gink. \$4-Caper, Viking, Smith Tim S. \$2-L. C. Dobbins, 2025 Lincoln Ave., Evansville, Ind. 47714 (through Bedad). \$.50-Captain To.

Balance June 1	1190.51
Receipts as above	30.50
Total	1221.01
July Enigma	42.75
Add. Env.	1.75
Mailing	6.75
Postage	3.25
Off. supplies	1.20
Total	55.70
Balance July 1	1165.51

The call goes out this month for a "few more flats", as the bin is getting low. Preparation of The Enigma three months in advance soon depletes the customary stock of puzzles of all departments, and, while there are some acceptable flats still to be used the inflow is far less than the outgo. A very few members continue to accompany their solutions with a new puzzle or two, and upon their shoulders falls the responsibility of others who might send one or two each year, or maybe none at all.

1. Storm-y. 2. Abandoned. 3. Sundae, Sunday. 4. Go on and on. 5. Wednesday. 6. Highway, why hay. 7. Plums-p. 8. Lay down the law. 9. Stallion. 10. Ailment, lament, metal, late, tea, at, a. 11. St. Elmo, motels, molest. 12. S-wind-led. 13. Buffet. 14. Flit-termice. 15. Friendliness. 16. Impure, umpire. 17. Cavi, civil. 18. Jackass, jackals. 19. Certain, curtain. 20. Antagonist, stagnation. 21. Lukewarm. 22. Chi-lin. 23. Fanfaron. 24. Emulate. 25. Mask, Youth, Elongate, Lonesome, Open, Nearly; myelon. 26. CLimate, THrive, IDiotism, ATElier; clithridate. 27. The Houston Astrodome patrons. 28. Vitamin. 29. Interposel, prelations, rantipoles, psalterion.

1. I do not like music played by 2. Rustic buys motor-truck drive 3. Gay roue caught ogling on boia 4. Shockingly enough Baltimore v 5. Jumbled cipher upset precise 6. When coryza hits congested me 7. Bongo rhythm banjo guitar acc 8. Rabid brats dart around yard

1, 2. By SHADOWY RAVEN

BRAVURA C I T A D E L
REZONES I M A G I N E
AZALEAS T A B R E T S
VOLTAGE A G R O T E S
UNEATEN D I E T I N E
REAGENT E N T E N T E
ASSENTS L E S S E E S

3, 4. By VADE

GAMETES R E T A P E D
ALIPATA E L E V A T E
MINIMAL T E N E R A L
EPITELA A V E R A G E
PAMECAT P A R A P E T
ETALAGE E T A G E R E
SALATES D E L E T E S

C
C R O
B R O U D
B O O S T E R
C R O S S F R O G
C R O S S F L O W E R
O U T F L O W E D
D E R O W E L
R O W E L
G E D
R

A N G O R A - - - P L U R A L
S - O P E R A - F L A M E - I
S T R E E T S - R U M P L E S
E R I - D I P L O M A - I M P
T A L C - C E A S E - A C M E
S I L O S - N U T - C I T E R
- L A R C H - D - W O R S T -
- - - S O O T - W O O S - - -
- S C A L E - G - E T H E R -
A P H I D - H A T - S I D E S
L I A R - C O L O R - P I L E
P E R - P E L A G I C - F I G
A L A M O D E - A M E R I C A
C - D O L E S - S E R A C - R
A G E O L D - - - D E T E R S

MAY SOLVERS' LIST

Everything: 32 flats, 5 forms, 8 crypts, 1 extra: none.
Amor 19-0-3-0; Ann Dhow 23-5-1-; Baful 31-*-*-*; Bam 30-3-*; Bee Wilder 17-0-*-*; Big Daddy 27-0-*-*; Billy Goat* 19-*-*; Blackstone 29-0-0-*; Bon Gay 5-0-*-*; Demijohn 17-4-2-*; Dunroven 6-0-0-0; Elmore 24-0-2-*; Fiddle 25-*-*-*; Hoodwink 31-*-*; Ifandor *-*-2-*; Jake 26-0-5-*; Larry 20-1-1-0; Martelia 24-*-*; Nutmeg 26-0-2-*; Maxim 0-0-0-0; Molemi 26-0-0-0; Oedipus 28 0-4-*; Paul and Virginia 30-0-0-*; Sherlock Holmes 3-*-*0-0; Sibyl 0-0-*-*; Sue de Nymme 7-0-0-0; Viking *-0-0-0.

PENETRALIA
1. REBUS (5 *3 11)
D GO I
D

"One nation, REBUS,
With liberty and justice
for all ..."
Bastrop, Tex. HOODWINK

2. LINKADE (7)
O my, so very ugly is the ONE
Of fat, not muscle. It's no fun
To cope with; it's not nice.
So, listen to my TWO advice:
Just TOTAL isn't nearly so good
As cutting down on all rich
food.

St. Petersburg, Fla. FIDDLE

3. REBUS (4-6)

L
DEGWID
A rather REBUS pastor,
With chagrin arose to say,
"My pet dog tore my notes up.
My sermon is short today."

A man, from another village,
Said "the impromptu was well
done;

If your dog has pups and you'll
sell them,

I'll give our preacher one."
Attleboro, Mass. CAPTAIN TO

4. DOUBLE HETERONYM
(*1: 4; (2): 5

*1. A province of ancient Egypt
is mine.

*1. A city in our state "forty-
nine".

2. A maxim wise, a pithy line.

2. A misshapen dwarf will I
define.

Jackson Heights, N. Y. OEDIPUS

5. BEHEADMENT (7, 6)

I pray I may ONE, my dear,
To call on you again.

Torn tho' I am 'twixt hope and
fear,

To TWO our love -- in vain?
St. Petersburg, Fla. FIDDLE

6. TRANSPOSAL (8)

"There is no FIRST", Old
Skinflint said,
As he endorsed the note.
"That's oke," I said, "your only
LAST

Is one old billy goat."
Corinth, Miss. FRED DOMINO

7. REBUS (1 3)

If "on" to this you manage well
to catch,
The answer is just the price of
a match,
That Tyler came before is known
by folk,
But who or what did follow our
good Polk?
Brookline, Mass. HOHO

8. RIDDLE (4)

The kid who the ENTIRE will use
When it's time to take a snooze,
Discards it for ten years or
more,
Then he buys one in a store.

In Latin class he's not a shark
But yet he wants a passing mark.
Later, with poker playing pards,
He hopes for good luck in the
cards.

Attleboro, Mass. CAPTAIN TO

9. REBUS (9)

OOM I A
Believe it or not, you'll have
to agree,
A victim of this oft goes on a
spree!

"Wine is a mocker"; his case
proves 'tis true.
He cannot help his acts, though
he keeps trying to.

Bastrop, Tex. HOODWINK

10. NUMERICAL (9)

1 to 9
A WHOLE is Cupid's "bestest"
friend;

That is, next to some "Reverend".
1-6-2-8

When Cupid shoots his arrow
true

It's TWO that one's made out
of two.

4-3-7-5-9
And WHOLE may help a pair to
ONE;

A few short words and oft
it's done.

Corinth, Miss. FRED DOMINO

11. REBUS (7)

ADECEDEFGHIJKLMNOPQRSTUVWXYZ
"Beyond a certain point you
must not ask,
Nor seek to peek beneath the
surface mask!"

'Twas thus that father spoke,
quite terse and brief,
He REBUS us to think about
belief.

Brookline, Mass. HOHO

12. TRANSPOSAL (6)

1 ONE and ONE and wrote a flat,
Its merit Ed denied;

1 TWO my ego with the words:
"Oh, well, at least I tried."

St. Petersburg, Fla. IFANDOR

13. REBUS (14)

SCAL M ERR
G

REBUS cause trouble, dissension
and strife;

They surely do not enrich any
life.

Gossip is vicious; it's low and
it's mean;

The fruit of such tattling you
surely have seen.

Bastrop, Tex. HOODWINK

14. SECOND-LETTER CHANGE (8)

It is Winter.
I look between the PRIMAL of my
window,
And behold FINAL of flakes of
new-fallen snow.

It is Summer.
I look between the PRIMAL of my
screen;

In my garden now, FINAL of
petals are seen.
Jackson Heights, N. Y. OEDIPUS

15. REBUS (2 3 4 2)

D T VE
O GI
If this rebus puzzles you,
You know just what you must do.
TOTAL and you'll surely find
What it is I have in mind.
Bastrop, Tex. HOODWINK

16. TRANSPOSAL (7)

The day had been long and PRIMAL
For Mother for her brood
Had been so noisy and fretful,
And some had been quite rude.
"FINAL!", said Mother, exhausted;
"Please take your playthings
and play

Under that big shady maple;
I've had enough for today."
Corinth, Miss. FRED DOMINO

17. REBUS (7 3 7)

L C S
A
Mother, may I wash my duds?
Yes, my darling daughter.
Use those new "buds"
That make all those suds,
And be sure and ALL in the
water.

Middleville, Mich. M. U. LATER

18. WORD DELETION (*9; 5, 4)
When as a tiny TWO, each word
She spoke, they thought best
ever heard.

But this was not the case when
she
Grew old, and interrupted free.
Embroidery full length she'd
talk,

And never look up at the clock.
Now friends avoid this champion
ONE,

And *ALL no longer has much fun.
(Without the star, ALL is a
daisy,

But *ALL, though queer, is far
from crazy.)

Brookline, Mass. HOHO

19. TRANSPOSAL (7)
Joe went to see his doctor
With a very odd sensation.
The M.D. said, "With me, it's
ONE."

Prescribed ... no hesitation:
A yellow pill.

The medicine was harmless,
A TWO, or so to speak.
But Joe recovered quickly,
Felt fine within a week.

No longer ill.
Greenfield, Mass. B. NATURAL

20. CURTAILMENT (8, 7)
The FIRST is apt to be a man
Who'll LAST his preparations.
His chances to become the champ
Sure have their limitations.
Norfolk, Va. VIKING

21. SEVENTH-LETTER CHANGE (10)
They used to call MY ONE a
flying boat,
When Wright and Curtiss were the
names to note.
But now, it is a boat that
climbs
Above the water's surface, most
all times.

MY TWO's an opal, maybe in a
ring,

A semi-precious iridescent
thing.

Brookline, Mass. HOHO

22. TRANSADDITION (9)

It's up to TWO to do our best;
To THREE our gifts with zeal and
zest.

We're not a member any more
For all we did was pay our FOUR.

Imagine! Rapiers and FIVE 'twixt
those

Attired in lace, and silken hose.

The Senator speaks with gestures
free;

Has he a point? I confess it
SIX me.

Who seems the means made right
by ends,
SEVEN himself -- and makes few
friends.

The place the finest fish are
caught

Is an EIGHT and shady, reedy
spot.

It's such a waste to wine and
dine;

We're busy; all our time is
NINE.

Houston, Tex. PAUL AND VIRGINIA

23. TERMINAL ELISION (*4, 2)
In *FIRST, a lake in far-off
Luzon,

A volcano asleep did lie,
Which woke and sent a ball of
fire

Two miles into the sky.

Between the beginning and the
end,

The sad results we've reckoned:
Destruction, death and sheets of
mud;

But still remains the SECOND.
Attleboro, Mass. CAPTAIN TO

CRYPTOGRAMS (Concluded):

8. Protectives, projectives.

Indianapolis, Ind. - BAFUL
YZQM PKXBF HXJMF FQXMC NMJZ RZKCL.

NXQBV IXKF, HJJCV GKJV. NBZJML RK-

ZV VMQZF SJXBV FMJQC; GKQDV HXZDV.

DTQKC WZXF. TYJKD.

24. FOURTH-LETTER CHANGE (5)

Poser here should stump a
Gringo:

1. "Local God" (Peruvian
lingo).

2. Monitor, not seen at sea.

3. Bird, raccoon, wild dog, or
tree.

4. Grouper of Brazil -- not
chub.

5. Grown to shade the coffee
shrub.

6. Smoked "for kicks" in far
far East.

7. This, preserved, is fine
for feast.

Norfolk, Va.

VIKING

25. ANAGRAM

So forlorn am I,

I feel like I could cry.

It all adds up to ANAGRAM,
Or, I, ONE SAD LOT am I.

Bastrop, Tex.

HOODWINK

26. A LONG "NIL" THAT! (7 2 3)

27. CAP BIG, DIRTY LIE (11 3)

28. ONES HERE "DIG" REAL TRAIN
(3 8 9)

29. TAB CHEF WHO CLEARED SINK
TOO! (5 4 3 6-6)

Norfolk, Va.

VIKING

-----oo-----

1, 2. DIAMONDS

1. Y. 2. LUR (New Stand.) 3.

Roses (ref. sp.) 4. Reaps again.

5. A cochineal-red monoclinic

mineral. 6. Japanese cut velvet.

7. Promptness. 8. Spireaeas. 9.

(Geol.) Facing toward direction

from which an overriding glacier
impinges. 10. EDS (Stratman's
Dict.) 11. O.

1. L. 2. Var. of SAYS. 3. Var.
of RUNNER. 4. Totalled again. 5.
Phalaropes or Bellows fish. 6.
The Book of the Taking of the
Land; title of an Icelandic chron-
icle history. 7. Settlements. 8.
Furnished again with panes. 9.
Obligations. 10. International
distress signal. 11. K.

Indianapolis, Ind.

BAFUL

3, 4, 5. SQUARES

1. Cupola#. 2. Leading toward
the source of a river. 3. One who
prays. 4. (Zool.) A group prac-
tically equivalent to the Picar-
iae. 5. The organs in which eggs
are produced. 6. Mild. 7. Schem-
ers.

1. Stingiest. 2. One who lev-
els. 3. A fossil egg#. 4. (Pale.)
Having a saddle. 5. Var. of ELL-
ASHIB. 6. (Music). The interval
of a seventh. 7. Any boa of the
genus Epicrates.

1. A defense or bulwark. 2.
(Hawaiian) A stout European bul-
rush adventive in Hawaii. 3. Dis-
figuring. 4. A sharer. 5. Kind-
ling. 6. A genus of marine snails
allied to Triton. 7. Tigre.

Milford, Ind. SAKR-EL-BAHR

CRYPTOGRAMS

1. Futurity.

Jackson Heights, N. Y. - OEDIPUS
 KSWD SPNVJUZO VVVCU: AV PNVVEQD UQ-
 PSI 'O IQRUX YQJ UQWQJJQA 'O AQJEP
 MI MRZEPZCB WZCP, MQPI, KXSJSKUVJ
 SCP EVSPVJOXZD.

2. "Help Wanted" ... eventually.

Attleboro, Mass. - CAPTAIN TO
 "LILI, ON IVRMSB USE?" "EMB, OMIT".
 "GIGI WISSMO NZT WNNX IV IVRMS; J-
 AMV ONMB BAM USE?" "KNLNTTNJ LNTVX-
 VR."

3. Street Scene.

Jackson Heights, N. Y. - OEDIPUS
 MASTERSTOP MBSCDSF: METGSBEHI MOJ-
 AKGSBRI MOBOGS MOBLFOK; MONBEPROT
 MAENEQBOMAI MSBUEBROTJS; MDJLMEJL-
 SN MDPUSBI MOTDJLK MSEMPS MEDTNV-
 POTL.

4. Pleasure, then pain.

Jackson Heights, N. Y. - OEDIPUS
 PQRSTU VWQXY ZAQZWY UZVCR XZRVCD-
 TZ TZEST YFGT HQW AWTZY VWIPAD QJ
 QVTZJ XZGTD. DIYYTJ DKIZSS VZLDFM-
 TD AQZR.

5. When Greek meets Greek.

Bastrop, Tex. - HOODWINK
 JCKRMBJKXFSROYN, MBXJ DMCNA *RNXF-
 SRMXY KWJAQSNX CFXYOSMB YWMDSN H-
 MGODH QKJD DMZNB. ---- XJCN TQD!

6. Futility.

Bastrop, Tex. - HOODWINK
 XCRUFP NCUBPW, ZXCSA PLNB XIRMTF
 QCGP YCRPX HTZFO QTWR CXTAWLR, TM-
 DPNYCGP XPFOTR TMYLCSP O.

7. Jilted.

Greenfield, Mass. - B. NATURAL
 CUTJPSE CATBRPF ETHUGVL LHRICI BV-
 FEK BSGK TFIM. RSFM GKUVB JIROTASE
 DSNQ SFGT CSDJGI; VRCGSAI NTUVJBP
 OVUIA.

(Concluded on page 7)

THE
ENIGMA

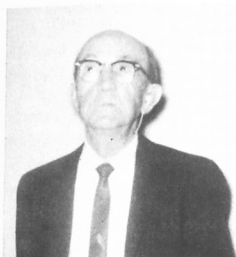
SEPTEMBER 1967

GREENFIELD, MASS.

NO. 762

JAMES LLOYD HOOD

(HOODWINK)



On February 27, 1932, a young man from Bastrop, Texas, joined the National Puzzlers' League as a tyro in puzzles. For the first few months that he solved in The Enigma, his listings of answers were few.

Through the help of old-timers, he became more and more familiar with Penetralia, so that in a very short time his lists of solutions grew. And, then came the first "complete". From then on, he managed this coveted accomplishment with regularity, and today is considered the "Top Solver of the NPL." Hardly a month passes but what his answers are received at Headquarters within a fortnight from the time the new magazine reaches him.

What is his name? None other

than HOODWINK.

But, solving has not been his only support of both the League and its magazine. Early in his puzzle career, he began to construct puzzles for others, and before long, his cryptograms bewildered his colleagues. Then, he turned to Rebuses and has turned out an admirable number of them. While these two types are his present favorites, he has constructed nearly every other known kind of puzzles. His forms are most creditable. Not only have his puzzles been well received by other solvers, but he has supplied countless articles to please the Editor, and his series of "This 'N' That" have been anticipated with pleasure.

Having benefitted himself, by contact with other puzzlers during his climb up the ladder of success in Puzzledom, he has assumed the role of unofficial welcome to other tyros, and many of our newcomers have appreciated his kindness in starting them on the puzzle road. His correspondence is enormous, for he tries to "keep in touch" with a great many of the membership today.

And so, this special issue of The Enigma is devoted to Hoodwink

The Enigma is the monthly magazine of The National Puzzlers' League, a non-profit educational organization. The subscription price is \$4.00 a year, or \$2.00 for six months ----- first-class mailing.

The Official Editor and Publisher is William G. Bryan, 133 Franklin St., Greenfield, Mass. 01301 to whom all communications should be addressed.