

## CRYPTOGRAMS

1. Tattletale notionists?

FIDDLE, St. Petersburg, Fla.

VZNA CNW, TEISMZO IWDDXMHT, EZC JN-  
YIXMOMXC IEOMHZMK OMZ=XMOOMH ANH-  
KT? LSKMXSJMO: EHHESQZSZQ.

2. Booked.

ACORN, New York, N. Y.

YJGUBQV RZYPKB QXLB, WZYXZ, XQ VDX-  
FB HPJGVZ, WZPG VXXBQ ZFVJRZ, BXUSV  
VXXBQ QBCVZNBFXKZ (KZGB ZWVBM QJXN  
"QXCVBDMKZ").

3. Unicycle recycled.

HAP, Princeton, N. J.

NIGHTOWL, WLLHYZGI, GINXGWTZ, TZVL-  
HWUI, UIXGVTNS, NSUVTZWX, WXZIGVWR,  
WRVXGHN: QGHPLIUZIR XWGXMI KGVYP-  
OZ KHXX.

4. Good intentions.

RHO, New York, N. Y.

WHIZ HYZXPDLV RKKPNBZ BHTKQ, QBHKV,  
VGHIP, ZPKLKDY, SJWYHL. JFZXH QKVZ  
SXKMJ NXHGWDKVJ CXKAJQZ.

5. Getting the point.

MERLIN, Bismarck, N. D.

ABXDEF GHIDJKBBLM, NBLOEP GINLBKF  
FKQB \*BIHCRE. XBGSIHFKD MESA ARGTB  
OABGECKR KNOJLBG AIBQLDT.

6. Liberated women?

B. NATURAL, Greenfield, Mass.

ENIGMA AOTLDRBSU VTGAISE GKFBNODH  
SARBI AVSDRL TOMBH. HENPC BNRV EO-  
ASH NKCTGA, BOEA DCFORVB UVRPTMNSAI.

7. Bizarre bazaar.

AJAX, Scarsdale, N. Y.

NQDJBKM, DPYBWF IQWFLRZPO OPWCQK  
JDBRMVL XGKM RBZD, XQFIYVK NZQWRJPD  
\*FRLYVBGW YKXMPFW GPXVBQW.



# THE ENIGMA

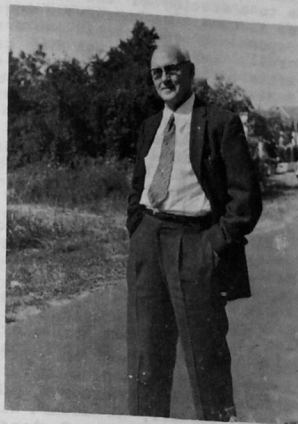
March 1976

Rochester, New York

No. 864

VIKING -- A MAN OF HIGH STANDARDS  
by BLACKSTONE

VIKING was welcomed into the Krewe in The Enigma of October 1929. At that time he was at Fitzsimons Hospital in Denver. His first nom was MR. AGAIN, but he changed it to VIKING before the beginning of 1930. In May 1930, ARTY ESS reported in Chat that "VIKING's life partner, VAL-KYR, is now a member of the Krewe, and some of these days the year-old Valdemar will make his debut." The prediction came true, as VIKINGSON has been a member for many years. In the 1933 Directory the family was listed as living in Norfolk, where VIKE resided for the rest of his life.



ERIK BODIN -- VIKING  
Jan. 3, 1896 -- Sept. 9, 1975

VIKING's first contribution to Enigma was not in Penetrabilia, but was a true story about an experience he had had as a radio operator in the Navy. He solved a cryptogram for his superior officer and as a reward was given a fifty-peso bill (the ship was in Philippine waters at the time.) Incidentally, VIKE's interest in crypts had led him to a puzzle department called "Solving Cipher Secrets" in the Detective Fiction Weekly magazine. The editor of this department was an NPL member with the nom of SUNYAM, and he told VIKING about the Krewe.

A crypt in January 1930 was VIKING's first puzzle contribution. His first flat was a transposal in March. He established his reputation in cryptography early, because in May 1930 he was appointed to the Cryptogram Committee by the NPL President, RALPH. Several more of VIKE's crypts were published in the next year or so, and in March 1931 his famous article, "The Cryptogram (for Beginners)," was published. This was a thorough analysis of the solving of cryptograms, and in my estimation it's just as valuable today as when it

THE ENIGMA is the monthly publication of The National Puzzlers' League, a nonprofit educational organization. Membership dues are \$5.00 per year (\$2.50 per six months) and include a subscription to THE ENIGMA via first-class mail. Overseas airmail \$10.00 per year. The editor is NIGHTOWL, Mary J. Youngquist, 299 McCall Road, Rochester, N. Y. 14616. Send dues directly to the treasurer, BLACKSTONE, Paul E. Thompson, East Alstead Road, Alstead, N. H. 03602.

was written. However, after his crypt article came out, only two or three more VIKING crypts appeared -- he had already begun to turn his attention to anagrams. It was in the latter field that VIKING produced his finest work -- many of his anagrams are masterpieces, and he had no superior as a composer of this type of puzzle. Especially outstanding were a couple of multiple anagrams in which the anagrams form verses in poems that have good rhyme and meter!

I had the pleasure of making three visits to VIKING's home in the 1940-43 period. It was great fun getting to know VIKING and his wife and son and being the recipient of their Southern hospitality. One time we drove down to the docks, bought fresh oysters, and feasted on them throughout the evening. Another time VIKING took me to a meeting of the Hunt Club, Norfolk's puzzle group, where I met A. CHEM. We kept up our acquaintance through the Scroll, a correspondence group within the Krewe. In some of his letters to the Scroll, and in some of his criticism of Enigma's editors, VIKING expressed his opinions bluntly and alienated a number of people, at least temporarily. I think, though, that an important reason for this was that VIKING expected others to hold to the same high standards that he set for himself. And those standards were high -- he worked and worked to improve a puzzle he was composing, and tried all the possible combinations in order to make sure he wasn't overlooking a single alternative that would make his contribution better.

## TWO HOOTS

VIKING: This issue is dedicated to the memory of VIKING. His contributions to the NPL were generous and varied: good puzzles and verses, tough crypts, a huge supply of ingenious anagrams, financial support far beyond normal dues (including underwriting of the Mini-Sample Enigma, which he also helped compile), and always an avid interest in the furtherance of Puzzledom. A sampling of his best puzzles is given in this issue; my thanks to BLACKSTONE and to HAP for painstakingly searching through the back issues for these.

NEW KREWE: A. R. CANE, Erie Yahn, 419 Spring Ave., Ellwood City, PA 16117; John Charlesworth, 1011 Buchanan St., Hollywood, FL 33019; Colin W. Gaskell, 46 Edward Wilson House, Princess Elizabeth Way, Cheltenham, Gloucester, England; Arthur K. Harris, 7 Heathcliff Rd., Rumson, NJ 07760; KRYPTON, Martin Gross, 145 E. 27th St., New York, NY 10016. A hearty welcome to the Krewe!

KREWE NEWS: Thomas Jobe has chosen the nom PATIENCE (for obvious reasons!), and Sam Harlan reversed his first name and added his last initial to come up with his nom, MASH.

CONTEST RESULTS: There was a quadruple tie among HAP, MANGIE, NIGHTOWL, and TREESONG for first place, so the second-place rankings were used to decide the winner; thus MANGIE won with her Rebus Quinere used to decide the winner; contest sponsor, will award the prize tade #13 in May. TREESONG, the contest sponsor, will award the prize (value \$8). I am now fully convinced that the Krewe has little interest in entering or judging contests; there were enough entries for this one (mainly from the same few people), but only four people participated in the voting! About a year and a half ago FARO sponsored a State Name -- Personal Name transposal contest; there was only one (incomplete at that) entry for that contest. Let's leave the contests to the "big-time" contest organizations and stick to the puzzling-for-fun from now on. That seems to be the Krewe consensus!

CONVENTION NOTES: I neglected to mention last month that registrants should specify the type of room (single or double) desired; if you have already registered, drop GINGER ELLA a card about this.

PUZZLE GOOFS: Feb. #19 is not a heteronym but a deletion. FIRST properly has 8 letters, and SECOND has 7. Sorry about that!

VIKING was one of the first in the Krewe to write me when I joined the NPL, and over the next six or seven years he provided encouragement and advice through literally hundreds of letters. Although an expert constructor of both crypt and flat, VIKING's life-long love was the anagram. From the beginning of our correspondence he was delighted to learn that I was interested in anagrams, and to a considerable degree he shaped my opinions on the worth (or lack of it) of the anagrams appearing in The Enigma. VIKING was a perfectionist and pointed out that he "was taught by HERCULES, the master of them all, that one should be very careful and not let a bad one slip in, for once a contribution gets in print there is no way to withdraw it! That goes for all puzzles whether they be flats of anagrams."

Earlier in his puzzle career VIKING was an excellent crypt constructor and solver and created a few of those impossible-to-solve crypts where each letter is used an equal number of times. In Helen Gaines' book Cryptanalysis, VIKING is given credit for conceiving the so-called "vowel-line" method of solution for simple substitution cryptograms. This method used together with George Lamb's "consonant-line" method would probably serve to solve 99% of the crypts that appear in The Enigma.

In September of 1970 my wife and I had the good fortune to meet VIKING and his lovely wife Jane and to stay overnight at their home in Norfolk. That was my first face-to-face meeting with another puzzler, and I still have fond memories of that evening spent in juggling various anagram bases and in a mini-convention with A. CHEM, VIKING, and myself. VIKING admired many past and present members of the Krewe, but he commented to me once that there "were two giants in the field: ARTY ESS and HERCULES." I disagree. There have been three giants in the puzzle field; VIKING was the third.

MERLIN

The League has lost one of its most loyal members, and I have lost a very dear friend.

I had been in the League three years when I moved to Norfolk in 1930. VIKING phoned me shortly after I arrived and welcomed me and suggested the Norfolk puzzlers get together occasionally, which we did. There were quite a few here then. Old-timers may remember STELLA, HIKER, SUSANN, PUZZLEDUMB, among others, and BLACKSTONE came all the way from Petersburg for the meetings.

Now for many years VIKING and I have been the only ones left here. The last time I saw him was three or four years ago when MERLIN and his wife visited Norfolk, and they all came over to see me, a visit I enjoyed so much. But we were phone pals, and surely kept those phone lines busy; VIKING was always the same calm, earnest, and dedicated puzzler.

I had a long conversation with him the day before he died, and he was in excellent spirits. What a shock when his wife phoned me early next morning to tell me he had passed away during the night. How I shall miss him, as will all the Krewe, but I know he will long be remembered for his loyal devotion to puzzledom.

A. CHEM

Like MERLIN, I received a letter of welcome from VIKING soon after I joined the NPL. This was the beginning of a huge file of "VIKING" correspondence -- words of encouragement, criticism of puzzles he thought were below Enigma standards, Swedish jokes (we shared that common heritage), and always a concern that Enigma editors should edit and weed out poor puzzles and poor verses.

Quite often I'd hear a hearty "How're you doing, girl?" when I answered my phone -- it was VIKING, calling to discuss an anagram that temporarily stumped him, to comment on puzzles that he especially liked or disliked, or just to chat. I will miss his calls and letters; I count myself fortunate to have joined the Krewe in the "era of VIKING". NIGHTOWL

## P E N E T R A L I A

Solution words appear in Webster's New International, 2nd & 3rd Editions (NI2 & NI3). Words appearing in only one edition are noted. Solution lists should reach the editor by April 25.

## 1. ANAGRAM (3 9 10)

A DIRE, INTENSE FLOP IN CASH

I face it in lands on sphere;  
Find capital's one sin here;  
On far China it piles needs;  
In this panic no real feeds.  
Dinero chase felt in Spain;  
Chits e'en final peso drain.

In episode franc isn't hale;  
Then Paris' coin needs fail;  
In chain stores feel nip sad;  
I.e., in cents near flop is had.  
Sale in pinch, no draft I see;  
Since it's plain hard on fee.

Pile not safe, in end I crash;  
If I retail none spend cash.  
Panic of idleness in earth;  
Co. fails in pennies' dearth.  
In clean finis trade hopes;  
Lean trade in finish copes.  
=VIKING (1931)

## 2. ANAGRAM (1 3 4 2 3 10)

LORD WHO FEES BANDIT OR THUG

(He's for tribute gold--and how!)

How oft this ogre ruled band,  
Thief who got rude robs land.  
He'd star in wet borough fold,  
One brute who hid graft sold.  
Dread won huge blot for this;  
Hurt, we'd darn bootleg of his.

To run beer loads, who'd flight?  
To brew found he sold a right  
For a blind he rot-gut showed;  
Fool brutish, hard gent owed.  
And, to do for, high brute slew,  
Bird grew flush on death, too.

Of horrid guts, a town he bled,  
One idol who graft thus bred.  
Blood-hunter who gats fired,  
Now oft held at burgh so ired,  
Sold out band for higher wet.  
Oh, hired sub won't lad forget!

Too far with blunders he'd go,  
Hard toter of guns hid below.  
Hand gets rod with foul bore;  
He's bold rat found with gore.  
For tough band worst he lied,  
Thus bold hog went for a ride.  
=VIKING (1932)

Note that in #1 and #2 each line of the verse also contains the letters of the anagram.

## 3. REBUS (2 2 2 3 2 3 3)

E < 782  
HY

Asked Farmer Croft of daughter May,

"Where is your brother John today?"

And May's reply to Farmer Croft Was, "TOTAL, sleeping in the loft!"

=VIKING (1969)

## 4. CURTAILMENT (6, 5)

A FIRST is a bat that is nuts about fruit;

You'll find him in Java, the big ugly brute.

"The beautiful" -- LAST -- is a term you must seek;  
I'll tell you this much -- it's derived from the Greek!  
=VIKING (1971)

## 5. TERMINAL DELETION (8, 6)

MY FIRST is a game not all colleges play;

It was invented by Indians, they say.

It's played with long sticks and a hard rubber ball.

Each goal has two posts seventy-two inches tall;

A bar the same length is in place LAST the top.

The clock runs an hour -- if no tie, game will stop.  
=VIKING (1968)

## 6. CHARADE (9; as a verb, only NI2)

"All terns," read the text, "have forked tails and red beaks."

The sentence contains what a real puzzler seeks,

And out of a clear LAST I instantly knew

How fellows could TOTAL and titillate you!

For "red beaks" say "bed reeks,"

a mix-up I call,

And such used in flat makes best poser of all.

Among the ingredients in Puzzledom's fare,

A TOTAL's the FIRST, I sincerely declare!  
=VIKING (1968)

7. FIRST-LETTER CHANGE (7)  
(FIRST is Scots)

Our FIRST was returning to Scotland

In quest for a mate, but could not land,

So he crossed waters vast, This young warrior LAST,

And fought for, and won one on Gotland!

=VIKING (1971)

## 8. REBUS (8 3 7)

BBBBBB < 773  
BBBBBB

The first, refined, loves books and art, or may pretend to do so.

The other one is unconcerned, has never heard of Crusoe.  
=VIKING (1968)

## 9. CHARADE (6)

MY FIRST is good, MY LAST is good,

And ALL is goody, too.

Perhaps you think I'm spoofing you,

But every word is true.  
=VIKING (1968)

## 10. SPOONERGRAM (3 7; 3 3 3)

"Decline the cone if dips MY ONE,"

That's what my doctors tell me. But I'm MY TWO to change my ways,

So I eat all they sell me!  
=VIKING (1966)

## 11. TRANSPOSAL (10)

The PRIMAL of the Berlin wall, To separate the East from West,

Created dangers for us all, But it is useless to protest.

Suppose some wild and romping lads

Try scaling it from West to East? Might they be killed by Vopo

cads,

Or would these FINAL be released?  
=VIKING (1965)

## 12. SIXTH-LETTER CHANGE (7)

I'm sure I can PRIMAL a letter myself;

It moves 'bout as fast as a book on a shelf!

With postage rates high, like the ones of today

It's really a FINAL -- that's all I can say.

=VIKING (1971)

## 13. REBUS (3'1 3 9)

ED  
ST < 783

Our Frigidaire is rather small, Yet big enough, for we MY ALL!  
=VIKING (1969)

## 14. TRANSDLETION (10)

10. King should rule supreme, his creed.

9. Flutelike notes from strings, indeed!

8. In some chorus he has sung.

\*7. This pertains to Latin's tongue.

6. Low-built wagon, or a dray.

5. Spelling -- nonphonetic way.

4. Misers like the feel of dough.

3. To peruse so you will know.

2. Lights are what, if they are lit?

1. We make nothing out of it!  
=VIKING (1969)

## 15. ANAGRAM (12)

I hesitate to tell you this, But you have HORRID "B.O.", MISS!

=VIKING (1969)

16. WORD DELETION (8)

Between fields on my farm a big ALL can be seen,

And 'twixt walks and our house are the lawns, neat and green.

After mowing the grass I use FIRST and work fast;

With a tool such as that I am expert -- and LAST!

=VIKING (1970)

17. BEHEADMENT (8, 7) (8 = NI2)

Find two women wanted here, The first of them a Scot;

Second one could be so too, But chances are she's not:

I. She peddles cabbage, This thrifty seller.

II. "Refill the mugs -- With brew!" we tell 'er.

=VIKING (1971)

18. FIRST-LETTER CHANGE (8)

Some students for lunch eat a sandwich and slaw,

Sip bottle of Coke through a plastic, ONE straw,

While others may gamble and lose on TWO dice

Their money for victuals, and that is not nice.  
=VIKING (1970)



19. SPOONERGRAM (Both 5 4)  
That you're subject to expunction  
If windshield wipers should  
malfunction  
On ride in downpour, is quite  
true;  
In FIRST there's danger present,  
too.  
If view is dim, don't speed,  
my friend,  
Some fools who did have met  
their end;  
Be sure to stay in LAST, I pray,  
And check your wipers every day!  
=VIKING (1969)

20. FOURTH-LETTER CHANGE (5)  
Poser here should stomp a Gringo:  
1. "Local god" (Peruvian lingo).  
2. Monitor, not seen at sea.  
3. Bird, raccoon, wild dog, or  
tree.  
4. Grouper of Brazil -- not chub.  
5. Grown to shade the coffee  
shrub.  
6. Smoked "for kicks" in the Far  
East. (NI2)  
7. This, preserved, is fine for  
feast.  
=VIKING (1967)

21. DELETION (9, 8)  
I FIRST the baker say his yearly  
LAST was much too high.  
No wonder that he charged a buck  
for eight-inch apple pie.  
=VIKING (1968)

22. SUBER (7)

G  
E

When Esau grew old  
His birthright he sold.  
In trade, what he got  
Could well have been hot.  
=VIKING (1971)

23. WORD DELETION (8)  
So many a FIRST seen in heavens  
at night  
Indeed make a wondrous and  
beautiful sight.

To separate solids from liquids  
they're in,  
We use a LAST fashioned of wool  
very thin.

Swift TOTAL are killers that man  
cannot stay;  
A high hill is safe place if one  
speeds your way.  
=VIKING (1972)

24. LAST-LETTER CHANGE (9)  
"Don't tell me what to do;  
I don't like to be sassed.  
Let me tell you, my friend,  
You are naught but a LAST!  
Do I have to repeat,  
Must I pen an epistle  
And then FIRST where I say  
'I'm boss, I blow the whistle?'  
=VIKING (1969)

25. REBUS (5 3)

H

"Don't interfere"  
Is written here.  
=VIKING (1970)

26. TRANSPOSAL (9)  
Inertia slows transmission  
of sound sent through a tube;  
It is expressed as "PRIMAL".  
(We cannot use a lube!)

At supermarket fruit stand,  
when FINALS are on sale,  
Pick out the ones you're buying  
and bring them to the scale.  
=VIKING (1970)

27. REBUS (8 2 9)

O D1  
D R

When I want a steak, please  
broil it just right,  
For if it is ALL, I won't touch  
a bite!  
=VIKING (1966)

28. TRANSPOSAL (8)  
MY PRIMALS have nerve to move  
into your home;  
They'll eat themselves fat, use  
your toothbrush and comb,  
And drink your best whiskey and  
also your wine.

A few may behave just like  
typical swine.  
The sad part of this is they do  
it for free;

Who pays all expenses we readily  
see.

If we were to ask them to cough  
up their share,  
They'd only MY FINAL, "Ha-ha!"  
So beware!  
=VIKING (1969)

29. REBUS (8)

MTH

Irritability and in excess --  
That's what my letters here duly  
express.  
=VIKING (1970)

30. FIRST-LETTER CHANGE (6)

I

The violent surf on the Guinean  
coast.

II (NI2)

This fish may be served by a  
Mexican host.

=VIKING (1969)

31. REBUS (2 3 5 4 2 3 3)

LBEW

It pays to MY REBUS, for if you  
are not,

A long stay in prison may well  
be your lot.

=VIKING (1967)

32. ANAGRAM (3 7 2 9)

POISON ACTS: I.E., FUMY DEATH

When warden gives the signal,  
in acid pellets drop.  
Condemned man wants to live, but  
heartbeats soon will stop.  
=VIKING (1968)

33. SPOONERGRAM (4 is 7)

By ferry at dusk we are crossing  
the bay;

Beside us a tourist is having  
his say:

"This tub is on schedule -- I  
won't miss my train;  
I know 'cause the FIRST through  
the darkness and rain."

When distance is right for  
reduction of speed,  
The captain gives signals that  
enginemen heed,  
And now the LAST down and she  
soon bumps her dock --  
Not one minute late, we can see  
by the clock!  
=VIKING (1964)

34. PHONETIC REBUS (10)

B O

Forget old B. O. Plenty;  
He does not fit this tale.  
I build a lot of vessels;  
They're made for you to sail.  
=VIKING (1964)

35. SPOONERGRAM (SEVEN is Scots)

When Scotty's wife made him  
a pie

She mixed some TWELVE to sweet  
it.

I saw her SEVEN (FIVE) the batch,  
And then I could not eat it!  
=VIKING (1967)

36. LAST-LETTER CHANGE (6)  
At Tammany Hall he was chief;

His reign as a FIRST was quite  
brief.

Some guy slipped a LAST in his  
pocket;

They fired him quick as a rocket,  
For none could stand scent of  
the thief.  
=VIKING (1968)

37. DELETION (10, 9)

Our PRIMALS board vessels, watch  
landing of goods,  
And often find cargoes belonging  
to "hoods".

They know where to find both the  
"pot" and the "horse"!  
The folks here on FINAL live  
near them, of course.  
=VIKING (1969)

38. WORD DELETION (9)

Among the ancient junk  
Packed in an attic trunk,  
I found some old COMPLETE;  
They reached from waist to feet!  
Now in this FIRST I say  
We'd call them LAST today.  
They showed below the dress  
Of ladies fair, I stress!  
=VIKING (1969)

39. TRANSPOSAL (4 6; 10)

MY FIRST are known by many names;  
They are wild cats no human  
tames.

On U. S. soil they thrive the  
best  
In mountain ranges way out west.  
MY LAST are cats we breed to  
show;

They measure up from tip to toe.  
If entry wins blue ribbon twice,  
That cat is worth a fancy price!  
=VIKING (1966)

40. SPOONERGRAM (6 6; 7 7)

I found the crowd at corner FIRST:  
So cheap, so dull, they drank  
and cursed.

One drink of Scotch was all I  
bought --

"'Tis not the place for me,"  
I thought.

I stepped outside to take a ride,  
And then my eyes popped open  
wide.

For overhead, I saw up there,  
A great big LAST to God knows  
where!  
=VIKING (1966)



## A SELECTION OF VIKING'S BEST ANAGRAMS

41. A GUN THEY LIST AS DIRT CHEAP (1972)  
(3 \*8 5 7)
42. PIPE SUCH ABLE RODENT -- I (1972)  
HURT (3 5-6 9)
43. SAILMAKER PIN (1 11) (1971)
44. IF ACT'S MET, PEER AT HER (1970)  
PERSON (3 5-5 11)
45. CAN UP HER ORBS' LIMITS (1970)  
(3 5 10)
46. HEED WARNING THAT'LL HINT WO (1969)  
(3 11 2 3 4)
47. TERM FOR DAIS, PAL (6 8) (1969)
48. WHAT'S HER PINAFORE? (1969)  
(1 5 5 5)
49. CLASSIC LUSTRE HANGED (1968)  
(3-5 11)
50. POSY GOT AT NILE (\*8 5) (1968)
51. POES MET NIGH A NET (1968)  
(3 4 2 6)
52. THAT'S NO MERE HAT (Antigram) (1968)  
(3 3-1'-7)
53. THOR'S DARN MUTE (Antigram) (1967)  
(1 12)
54. RAN GAME (1967)
55. TAB CHEF WHO CLEARED SINK, (1967)  
TOO (5 4 3 6-6)
56. SEE "TO HOLD ME IN A RUT" (1967)  
(3 4 3 7)
57. LIKES OF BREED OFT GATHER (1966)  
FOR CHAT (5 2 1 7 5 8)
58. FLAG RED; YACHT FANS WILL (1966)  
MASS IN PORT (3 7 2 5 5 8)
59. DULY RUNS TIMBER (6 8) (1965)
60. IN CATHEDRALS (3 9) (1965)
61. MOST FOLK LOAD IN CAMERAS (1964)  
(\*7'1 \*9 4)
62. "FAGS" REEK NICOTINE; DRAGS (1964)  
GOT THEM! (3 6 2 7 10)
63. GO RECORD A HEART CLIP (1964)
64. RELIC COST ME A LOT (1963)  
(1 9'1 4)
65. BEAR HIT DEN (1963)
66. CADETS' EDUCATORY SEAT (IF (1963)  
AIRMEN) (\*6 \*6 \*3 \*5 \*7)
67. NEAT NAVY MALES EDUCATED AT (1962)  
THIS (\*3 \*6 \*6 \*5 \*7)
68. ARMY SET IS MAINLY EDUCATED (1962)  
AT IT (\*6 \*6 \*8 \*7)
69. CAN END CURST LIFE TOO FAST (1962)  
(2 3 2 4-11)
70. A NOTE INQUIRES (1962)
71. HERE COME DOTS (\*3 \*5 \*4) (1951)
72. HOW TON ADDS UP (U.S. TON) (1949)  
(3 8 6)
73. ITS FLARE IS OMEN (1941)  
(\*5 \*4'1 4)
74. MEN GO CHAT SLANDERS (3 14) (1941)
75. EARTH CROWNED TOILS (1940)  
(3 5'1 8)
76. THROBS! "WHALES" (4 3 5!) (1940)
77. FAR EGYPT HID CORPSE AT HOME (1937)  
(3 5 7 2 \*6)
78. 'TIS A DEVIL'S PRICE FOR THY (1937)  
JESUS (\*5'1 6 6 2 6)
79. SHI SO BAR HAS MET IN SECRET (1937)  
(3 4 7 7)
80. I BAN SOT, HATE LATTER (1937)  
(3 5 9)
81. THESE NOT LIT (AS AT BAR) (1936)  
(3 5 10)
82. I MEET MAN APT IN ROLE OF SHE (1935)  
(3 6 13)
83. HERE MEN FAIL NOT TO APE (1935)  
MISS (3 6 14)
84. GOD GREW FOOD IN EDEN; EVE (1934)  
TOOK FALL (4 2 9 2 4 3 4)

85. A CLICK IN THE LEMONS (1934)  
(6 4 7)
  86. SAFE ETERNAL LIVING (3 11 4) (1934)  
(1934)
  87. ON LARGEST BIRDS WHEN AT SEA (1934)  
(3 9 11)
  88. FRIED T-BONE MESS IS O.K.; (1934)  
EAT WHEN HOT (9 9 4 6)
  89. CARS IN HOT MILEAGE BOUT (1934)  
(3 6 11)
  90. WATER'S IN ALL THESE (3 8 5) (1933)
  91. I'M FORCE HOSPITALS NEED AND (1933)  
FIND HEALERS' COMPOSITE (3 7 10)
  92. IT IS ONE AREA RED MAN CAN (1932)  
THRIVE IN (3 \*8 \*6 11)
  93. FRIDAY ONE BOON ON BECURSED (1932)  
ISLE ("\*8 \*6" 2 \*6 \*5)
  94. I TORMENT ANY "CON'S" LIFE. (1932)  
(8 11)
  95. WHAT A PREVENTER OF LIFE (1932)  
LOSS! (3 3 2 4-12)
  96. DOC'S PRIM LATIN RECIPES (1932)  
(7 13)
  97. IT'S "SOS" READ IN FLAGS (1932)  
(1 6 2 8)
  98. THESE CHURN AIR (3 10) (1931)
  99. NO WIRE UNSENT (\*7 \*5) (1931)
  100. ACHE KNIT IN NAPE (1931)  
(1 4 2 3 4)
  101. ONE THAT RUINS ACT DONE ON (1931)  
AIR! (3 5 7 9)
  102. O, I'M PENNY (3 5) (1931)
  103. ENGLISH IN FLIGHT MADE PORT (1931)  
(3 7 2 3 \*8)
  104. O, IT PRIES CASH FROM BEAU (1931)  
(1 6 2 7 4)
  105. O! WHEN NEAR BY HELL, ONE (1930)  
HEARD A POET (7 4, 3 2 3 5 4)
  106. NOTES TOUCH MY BURIAL (1963)  
(3 8 7)
  107. SUBER (8)  
Ø R T  
The REBUS, or tenor bassoon,  
Is useful for playing a tune.  
=VIKESONG, Norfippa, Vp.
  108. CHARADE (8: LEFT, RIGHT, ALL)
  109. TRANSPASAL (8: FIRST, LAST)  
VIKING has left us --  
One of our LEFT,  
ALL much upon us;  
We feel bereft,  
Quick to acknowledge  
How much we RIGHT  
To his example:  
Shrewd, erudite,  
Skillful composer,  
FIRST as a friend,  
LAST as a critic,  
Alert to the end.  
=HAP, Princeton, N. J.
  110. PHONETIC CHARADE (\*6)  
His a competitive spirit --  
Puzzledom's shining star;  
We'll miss his active ONEing  
Now that he's Crossed the Bar.  
He was a master of puzzles,  
A TWO we deemed him to be;  
His forefathers ENTIRES bold,  
In long-ago century.  
=MIS-KNO-MER, Miami Beach, Fla.
  111. REBUS (\*6)  
6K  
Peerless fighter for the write  
Of puzzles at their best,  
You were everyone's delight,  
The best by every test.  
=FIDDLE, St. Petersburg, Fla.
  112. ANAGRAM (\*4 \*5, \*7, \*8)  
I FIND VIKING, RARE ILK, NO BOOR!  
OR, VIKING, FRIEND IN BOOK LAIR  
=NIGHTOWL, Rochester, N. Y.
  113. ANTIGRAM (\*7, \*8) (1970)  
NO LAIR FOR VIKING  
=THE GINK, Caledonia, Mo.
- F O R M
1. LEFT WINDMILL form: .....
    1. An NPL member we ..... cannot -----
    2. More ..... ashen.
    3. Asian mountains. ....
    4. Inquire again. 5. Vi- ....
    - king. 6. Port city of Japan. 7. Old-fashioned. 8. Goddess of Peace. 9. Types of paintings.
  - =PANACRO, St. Louis, Mo.

## TREASURER'S REPORT

Receipts in Nov., Dec., & Jan.: \$30--ANN DHOW, LARRY. \$20--Jack Levine, MANGIE, OEDIPUS JR. RHO. \$15.99--Bank interest. \$10.98--TREESONG. \$10--ABSOLVER, FUN, C. W. Gaskell, SIGMASEXSPRING, THE GINK. \$6--WICK. \$5--A. R. ANE, Martha Awdziewicz, BAFUL, Hal Baldwin, BOB, James Boutelle, Richard Browning, Virginia Burgess, Mrs. Charles Carey, Tom Cate, C. KERR, COLEUS, Joseph Conan, DANDY, DISCOLOG, ELAITCH, Arthur Evans, FANACRO, FIDDLE, Gene Fiege, Mr. & Mrs. Paul Fletcher, Clare Grundman, Grace Hall, HAP, Arthur Harris, Mrs. J. Raymond Harrop, HELEN HIGHWATER, JUDGE, KRYPTON, LESTRADE, Constance Leyland, LBBY, MASH, Leah McCahan, MIDURNDIST, MISSILE C, Dan Morrison, O'CASEY, Louis Ot-tovich, PATIENCE, PEEYOU, PROBLEM CHILD, PROCRASTI, ROGOR, Jeanne Roman, Katherine Schmitt, Jeanne Spiller, THE THIMBLES, Marie Van Loon, Kathryn Webber, WEDE, ZER-0. \$4--ROGOR (for back issues). \$2.50--HAZY.

Balance Nov. 1, 1975 \$ 1375.56  
Receipts as above 489.47  
TOTAL 1865.03

Expenses \$ 24.88  
Envelopes 69.28  
Nov. Enigma 29.12  
Postage & addr. 4.22  
Nov. issue 22.30  
December Enigma 70.42  
Addr. Dec. issue 4.41  
Postage Jan. issue 22.78  
Postage Feb. issue 30.90  
Editor (postage) 24.02  
Down payment for Convention Hqs. 100.00  
TOTAL 472.95  
Balance Feb. 1, 1976 1392.08

Note: Beginning with the December issue, addressing and postage charges are separate; the shop that does the addressing had mechanical problems with their postage metering machine, so the envelopes are now being stamped by hand (the Editorial hand). The item "Editor (postage)" is for stamps used for mailings other than regular issues.

## DECEMBER SOLVERS

December Enigma had 67 flats, 4 forms, 7 crypts, and 14 extras; 34 solution lists were received. Acceptable alternates: PEA-HEN-S for #11 (one of the 2 solvers who had this sol explained that pea-fowl come in 2 basic colors according to the encyclopedia; and of course there are pigeon peas and hens); RISK for #12 (2 solvers); GINS/SIGN for #49.

BLACKSTONE ended the solving year with a fine flourish; he had a complete.

ABSOLVER 40-0-0-10; A. CHEN 45-0-3-9; ACORN 56-1-3-13; AHAB 1-\*1-1-; AJAX 0-0-\*0; AMOR 18-0-1-0; ANN DHOW & MY MY 53-\*6-13; CAL CULUS 31-0-0-9; DADA 62-\*5-5-; FANACRO 21-3-0-\*; FARO 64-0-0-4; FIDDLE 26-0-1-2; GANDALF 43-1-0-12; GRAYDOL 64-\*3-3-; HAP \*-0-6-\*; IFANDOR 41-1-3-11; KAMEL 17-0-0-3; LARRY 27-2-0-4; MANGIE 54-0-0-10; MEO 46-0-1-7; NEOPHYTE 22-0-0-1; NUTMEG 43-3-0-12; OSAPLE 20-0-0-0; PETE VROLEUM 14-0-0-0; RHO 65-\*6-\*; ROGOR 7-0-1-0; SEABEE 9-0-0-5; SHERLOCK HOLMES 2-\*1-0-0; SONAROSE 37-0-2-0; SQUIRREL 23-0-1-5; TAV 5-\*\*-0; THE GINK 22-0-1-0; TREESONG \*-\*-4-.\*

## Solving Frequency List

FLATS: 1-27, 2-22, 3-16, 4-14, 5-16, 6-23, 7-21, 8-12, 9-12, 10-14, 11-5, 12-25, 13-28, 14-16, 15-12, 16-26, 17-20, 18-28, 19-22, 20-15, 21-18, 22-26, 23-8, 24-9, 25-8, 26-12, 27-25, 28-7, 29-15, 30-13, 31-17, 32-14, 33-24, 34-17, 35-12, 36-14, 37-18, 38-18, 39-21, 40-22, 41-19, 42-13, 43-18, 44-8, 45-18, 46-29, 47-15, 48-7, 49-18, 50-11, 51-20, 52-21, 53-15, 54-28, 55-11, 56-17, 57-15, 58-20, 59-16, 60-21, 61-27, 62-29, 63-24, 64-25, 65-12, 66-7, 67-25. FORMS: 1-11, 2-13, 3-10, 4-13. CRYPTS: 1-21, 2-12, 3-8, 4-13, 5-5, 6-6, 7-5, 8-20, 9-20, 10-20, 11-19, 12-18, 13-10, 14-11.

CONVENTION REMINDER: Register by May 31, 1976, to qualify for the \$5 discount. See the February issue for registration details. Set aside August 13-15!

## JANUARY SOLUTIONS

1. Dr-Amati-cs. 2. Daffodil, red roses; order lid off ad. 3. Rutabagas. 4. Clerics, circles. 5. Clavet, Vietcong. 6. Popeye. 7. Slipstick, lipsticks. 8. Orthopedist. 9. Stunted hag, hunted stag. 10. Cour-thou-se. 11. Ichneumon, pneumatic. 12. Six alive pine; none nip evil axis. 13. Sees-a-w. 14. Expectations. 15. The mattress. 16. The checkmating. 17. Masculine. 18. Fusileers. 19. Cantankerous. 20. Notwithstanding. 21. Out-r/s-ider. 22. Decontrol. 23. Snowblower. 24. Simonen, Maigret. 25. Handicapping. 26. Fifty-nine, nifty fine. 27. White line, light whine. 28. Elephantiasis. 29. L-attic-ed. 30. Closed minds made up in advance. 31. Incinerated. 32. Hearing aid. 33. Combative. 34. Adolescents. 35. Egomaniac. 36. All inchoate. 37. F-ill-ed. 38. Salami. 39. Q/D-u-ality. 40. Fractionated, fornicated. 41. Mansioner, Emersonian. 42. Sighs abash. 43. High-flown. 44. Bittersweet. 45. Abandoned. 46. Second team/mate. 47. Apron, doted. 48. Confound. 49. Am GI's. 50. Imp-o-arted. 51. De-part-ed. 52. Party line, interplay. 53. Liaison. 54. Stenich. 55. T-iresome. 56. Denude, duceen, Dundee. 57. Diamond. 58. Bombardon. 59. Finesses. 60. Viewing. 61. Udall, U-Haul. 62. Pr-o-x-y. 63. Sealing, ceiling. 64. Outcross. 65. Results, russet, truss, rust, rut. 66. Meat, sweet; sweetmeat. 67. Mollastone. 68. Discover. 69. E-p-x-arch. 70. C/H-uriling. 71. M/D/P-osology. 72. P/M-arquetry. 73. Icono-p/c-last. 74. Phy-t/c-ography. 75. Hy-d/g-rophanous. 76. Prenatalists, plaster saint. 77. Dis-put-able. 78. R/F-eckless. 79. T-ouch-able. 80. Rape, Sober, Ribes, Alow. 81. Happy holiday season, Krewe. 82. Richard Nilhous Nixon. 83. The face that launched a thousand ships. 84. Sanitary. X-1. We are here not to get all we can out of life for ourselves, but to try to make the lives of others happier. Oeler. X-2. Hottentot, totaquine, inelegant, antecosta, staghound, undershot. X-3. He is not only idle who does nothing, but he is

idle who might be better employed. Socrates. X-4. We had as lief not be, as not be ourselves. Hazlitt. X-5. Kookaburra, razorbacks, koolokamba, bassarisks.

## CRYPTS:

1. Words reported to have been u  
2. The cross-word puzzler does n  
3. Earnestness of "Fem Lib" move  
4. Some men open newspapers firs  
5. Voyeur rakes turn over old le  
6. How low is ignorance! A lady

## FORMS:

1. GUISED	2. P	4. A
ANNEXE	CAD	PS
IZTLES	MIED	BT
NORATE	MENACES	GEAR
ONAGER	CINQCENTS	BENSO
REPORT	PARACENTRIC	MARZAN
3. ICHNEUMON	DECENNTHU	CARMANA
C SLAVE	DENTIST	CUMCANTU
H CETIC	STRUT	MAHMONIST
N AMENE	SIM	BARCOVILLE
ESCALADES	C	GERMANIVIES
ULEMA S	BENZANILIDES	
MATED A	PEASANTSLEEVE	
OVINE R	ASTRONAUTESSES	
NECESSARY		

## FORM 2. DOUBLE SQUARE

ACROSS: 1. (1st Ed.) Persalic rock. 2. ----- Aires. 3. Claws#. 4. Spt. Pernambuco state, E. Brazil. 5. Abate. 6. Erik Bodin. DOWN: 1. (Ref. sp.) Absolve. 2. Kernels. 3. Dulse#. 4. The spider. 5. (Oxf. E.D.) Soldan#. 6. The sanga-sanga. =TAV, Vancouver, Wash.

## ...AND A HOLLER!

## FAVORITE PUZZLES FOR DECEMBER:

ACORN--7, 31, 32, X-14. AMOR--6, 8, 26, 33, 39, 54, 64, 67. ANN DHOW & MY MY--7, 20, 27, 30, 33, 65, 67. BLACKSTONE--16, 20, 28, 32, 34, 35, 37, 42, 48, 50, C-7, X-14. DADA--3, 16, 20, 23, 55, X-14. FARO--4, 32, 38, 44, 60, 61. GANDALF--7, 16, 20, 25, 37, X-5 through X-8, X-14. GRAYDOL--32, 43, 55, 66. HAP--15, 23, 24, 26, 40, 41, 53, X-13, X-14. LARRY--7, 18, 59, 64, F-2, X-7, X-8. SQUIRREL--16, 22, 54, 67. TREESONG--3, 20, 25, 29, 32, 41, 43, 55, 61, 63.

Riddle: Where can a puzzled nun charge an atom? At the August NPL CONVENT-ION, of course!

## CRYPTOGRAMS

VIKING (1930)

## 1. Military mess.

XZQAW KWOMFBQ BEMZFQK ZNFRSMD; OXWT  
HFXWK RZUBX OZJFEWX DBTFMNWXX; KZJ-  
LB FRYZOMK VWRBJFKD KBJFV XZLWJFQ  
AJZOPK.

VIKING (1930)

## 2. Quad-drill.

QZHX QHXS GMFX, XSPQ KPWX, GFXM XF-  
QZHX QHXS GMFX, XZQM QXZH. XQZH QMZV  
GM XPWK XQZK, XZQM QXZH. XQZH QMZV  
VZQM, XMZQ. XFHM, QZKX KWPX "KZQX",  
SFQX QZVM HZQX.

VIKING (1962)

## 3. At ease!

RFYDQ \*JMVYZ XBVKC GBCPK GFLSQ WFG-  
VQ TMJPK, PDBXR RYZTJ CYFJS, WLKNT  
WMLSQ VFXRZ XBGLC DNJSQ WNDXL, TNC-  
PK YNWBG VMPSZ RMDZT.

VIKING (1963)

## 4. They're off!

YMZUQ JZPFV XKPCJ YPCJQ \*WJVSC \*OS-  
ATV XGMDU; \*DKBTU OGPFFV XBDUQ JBFCQ  
YZSUW AKBZW \*OWGYQ DGS AO AMXDK YGM-  
AZ MCSTF \*KBTOP FWTXV.

VIKING (1970)

## 5. News item.

QKBC LFHN JMGVLZ QPBDJX LKWG, GMBH  
CWVNDX RFHW=MFD RBSQ LDWKZ. SVNJX  
GFPSR MPKJN "LFZWX". DBCH QVGZ RVC-  
SN HPSZ RKPQ CXJM.

VIKING (1971)

## 6. Dirty doings!

BCKGD NGXLT MFHBN, LFH BX QKSWP NF-  
SXJ, BZRM C VCHBT PKGWQ MKGW P ZWHXL  
QDZJV, PSKJT RCLV RFGMJ NSQDV, DW-  
QRT CZXNT VRHMJ PZFLD.



# THE ENIGMA

April 1976

Rochester, New York

No. 865

## TWO HOOTS

NEW KREWE: Mrs. T. Hersh, 2820 Livsey Ct., Tucker, GA 30084; Charlotte J. Holt, 942 W. Pierson, Apt. 3, Phoenix, AZ 85013; Ann Krutka, 506 Quincy, Pueblo, CO 81004; Ronald J. Mainguth, Box 264, Greentown, OH 44630; MATA MATA, Seymour Shedlow, 3104 Fargo, Chicago, IL 60645; Frank C. Payn, 717-16th St., Bellingham, WA 98225; Ramon Slupsky, 11442 Paloma, Garden Grove, CA 92643; Ellen Southall, Pl., #209, New Orleans, LA 70127. Several of these new members read about NPL in The People's Almanac and others in SUNNY BOY's article in Prizewinner. MATA MATA is FANACRO's nephew.

KREWE NEWS: Again we have sad news -- BIG DADDY, Dr. Richard B. Smith, died on January 27. He had been a member for many years and often sent in solutions, particularly crypt solutions. His wife wrote, "He spent many happy hours working on puzzles." \*\*\*\*\* Virginia Burgess has chosen the nom KATRINKA. \*\*\*\* ANN DHOW wrote that CAL CULUS were hospitalized (both are home recuperating now, and ANN DHOW joined the unemployed (she says she's enjoying it thoroughly, though!). All three hope to come to the convention in August. \*\*\*\* DENDAI DIX sent a colorful postcard from Spain. They spent a few days in Africa, but most of their time abroad will be spent in the Spanish province of Andalucia.

MISCELLANEOUS: Note TUT's subtle comment on the subject of "careless flattery" in #18 this month! \*\*\*\*\* Several constructors have sent in puzzles which they've called "Deletion and Transposal" or some such title. These are actually Transdeletions, and as such they need at least four parts, according to the Primer rules. Thus a pair like BLUSTER-SUBTLE is a fine start on a Transdeletion but is not sufficient for a complete puzzle; carry it to at least four words. \*\*\*\*\* More Convention news will be in the May issue. Make your reservation now! (See February Enigma for details.) \*\*\*\*\* The new membership directory will be mailed with the May issue. \*\*\*\*\* The correct enumeration for March #86 is (2 11 4).

FAVORITE PUZZLES FOR JANUARY: ABSOLVER--5, 42, 56, 62, 79. AJAX--56. AMOR--9, 14, 15, 20, 29, 33, 34, 63, 79. BLACKSTONE--11, 13, 15, 16, 36 (for the idea and verse), 41, 52, 83. DADA--40, 53. FARO--8, 11, 13, 15, 20, 26, 27, 40, 42, 52, 67, 76, 80. GANDALF--3, 11, 13, 28, 40, 56, 58. GRAYDOL--11, 53, 56, 58, X-2. HAP--3, 15, 22, 32, 39, 43, 52, 56, 82, 83. PATIENCE--5, 9, 10, 18, 43, 64, 68. SQUIRREL--26, 27, 38, 56, 57, 81. TREESONG--15, 30, 52, 82.

THE ENIGMA is the monthly publication of The National Puzzlers' League, a nonprofit educational organization. Membership dues are \$5.00 per year (\$2.50 per six months) and include a subscription to THE ENIGMA via first-class mail. Overseas airmail \$10.00 per year.

The editor is NIGHTOWL, Mary J. Youngquist, 299 McCall Road, Rochester, N. Y. 14616. Send dues directly to the treasurer, BLACKSTONE, Paul E. Thompson, East Alstead Road, Alstead, N. H. 03602.